



Making a difference through local government focusing on waste management

Tackling climate change will involve large scale change for business, local communities, government and their relationships with people

The speed of change and the direction of change is being decided now in government and international forums

With change will also come opportunity, new business challenges and new regulatory challenges at both national and local government level

There will be some difficult transitions and both business and local government will share the challenge of carrying the consent of customers and the public with them

Making a difference through local government

- **waste management and sustainable consumption issues**
- **local authority best practice**
- **the role of local government as a champion for change**

Mark James

Chief Executive, Carmarthenshire CC

Claire Gibson

**Director of Sustainable Resources,
South West Regional Development Agency**

Andrew Mullaney

Head of Environment & Communities, Lancashire CC

Richard Shipp

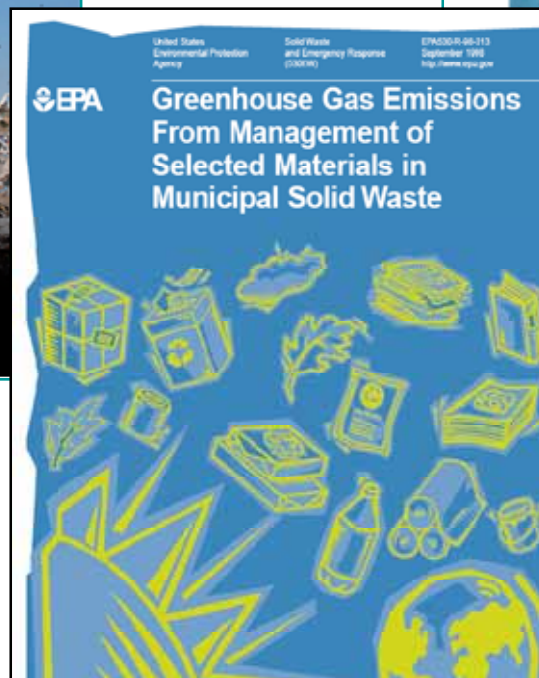
Assistant Waste Promotions Officer, East Sussex CC

What we already know...

a recap

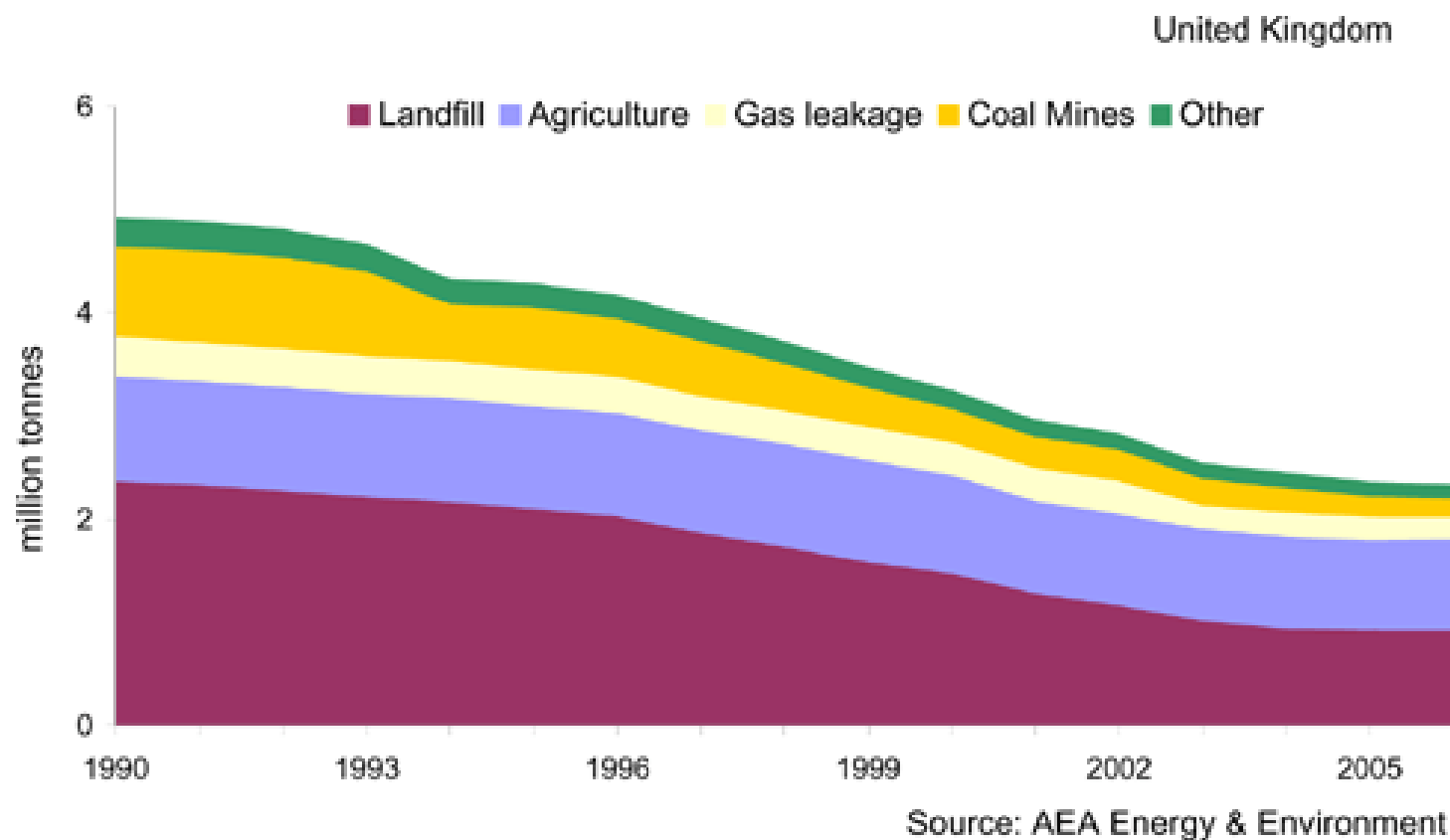


Reports to review



Methane emissions by source

1990 – 2006



Waste management

The facts

Waste management is a significant contributor to UK emissions

- transport, processing, treatment and landfill

Over 430 million tonnes of waste materials per annum in UK

- contributes 2.5% to the national total GHG emissions
- 41% of all methane emissions

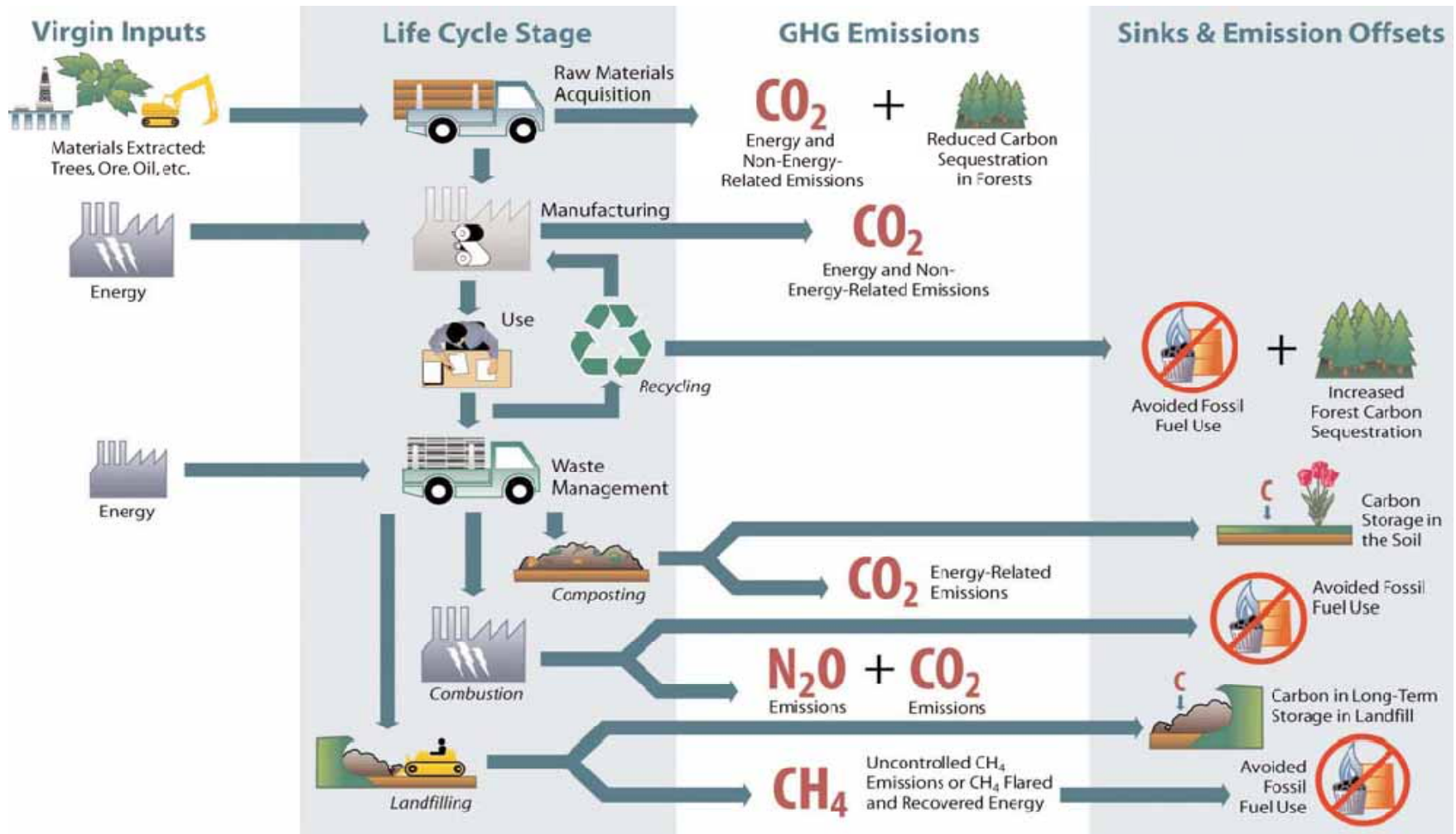
Waste management accounted for 22 Million tpa of CO₂-eq (2008)

- 400,000 tonnes of carbon dioxide (GWP = 1)
- 964,900 tonnes of methane (GWP = 21)
- 4,200 tonnes of nitrous oxide (GWP = 320)

93,000 tonnes of methane released from food waste in landfills

- equating to 1.95Mt of CO₂-eq
- equivalent to over 250,000 return flights from London to Sydney!!

The carbon cycle

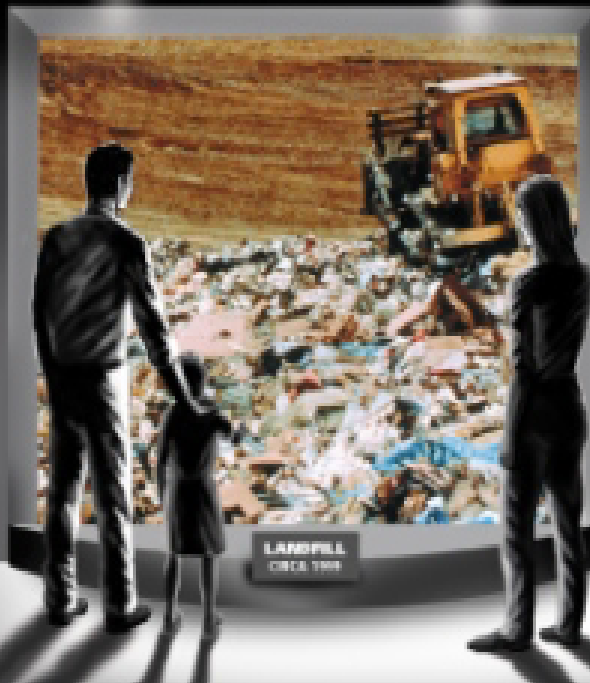


**Are we taking it
seriously?**

Achieving the targets



The World of Yesterday



LANDFILL

CIRCA 1999

A hole in the ground where valuable resources were needlessly buried.

This practice was ended in the early 2000's with the introduction of **ZERO WASTE**.

People don't like change?



EFW

MRF

AWC

IVC

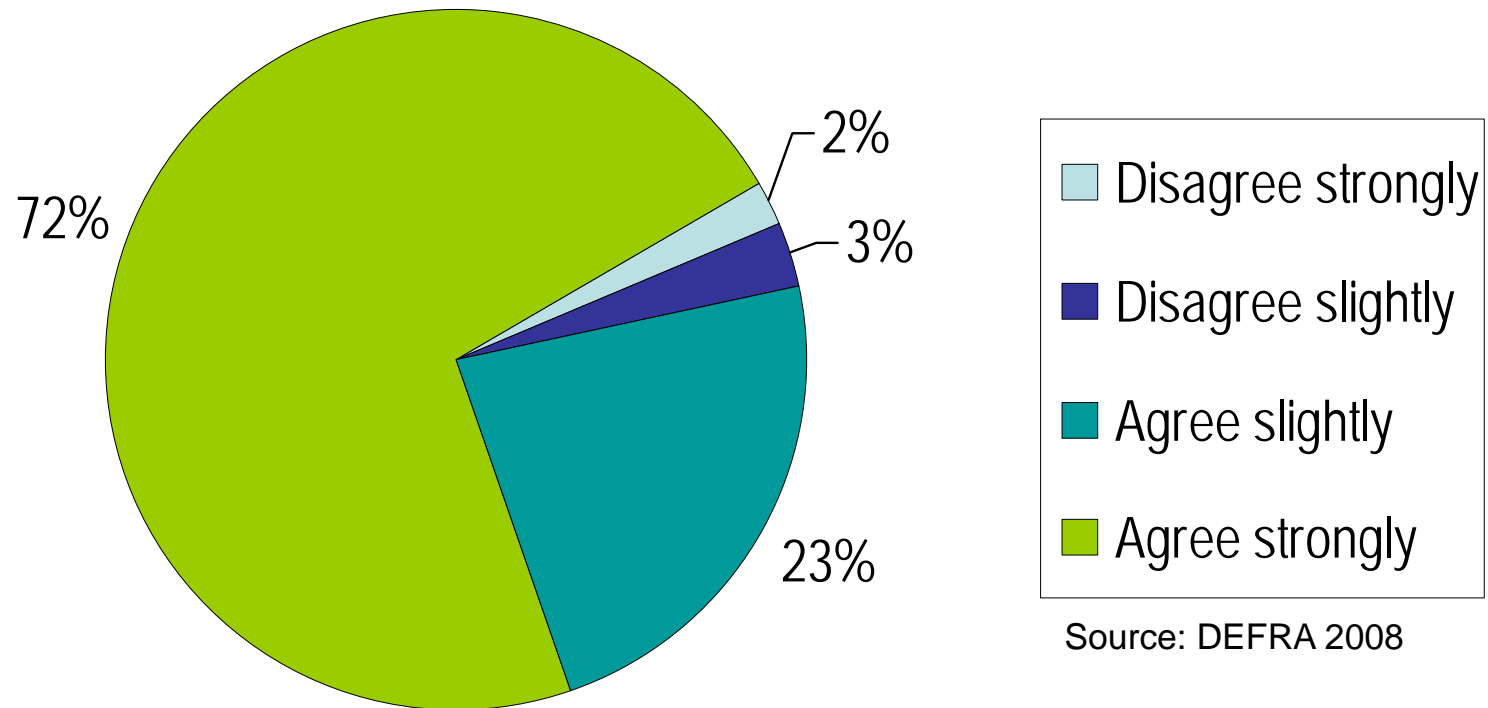
MBT

...the public is linking climate change to waste management.



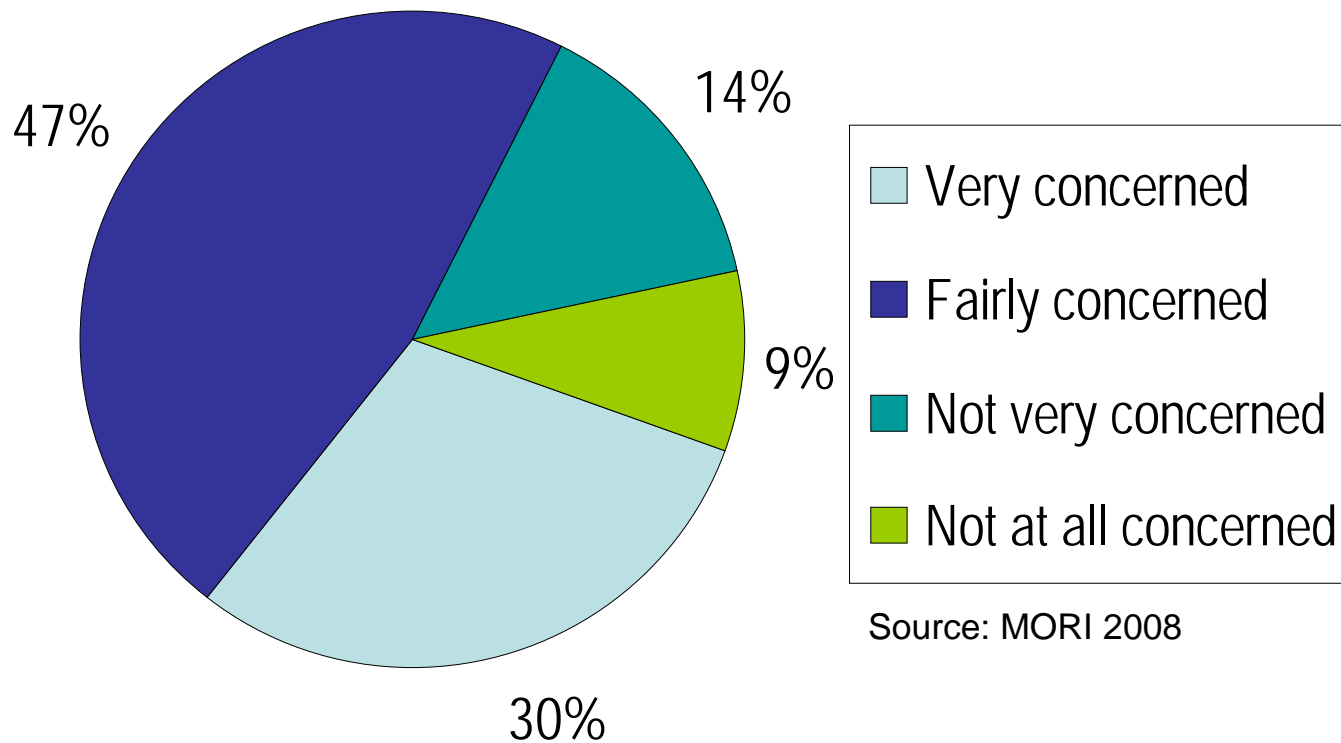
**Waste management systems alone cannot deliver less waste and increased recycling.
Success will only come with public buy-in and support.**

Is the world's climate changing?



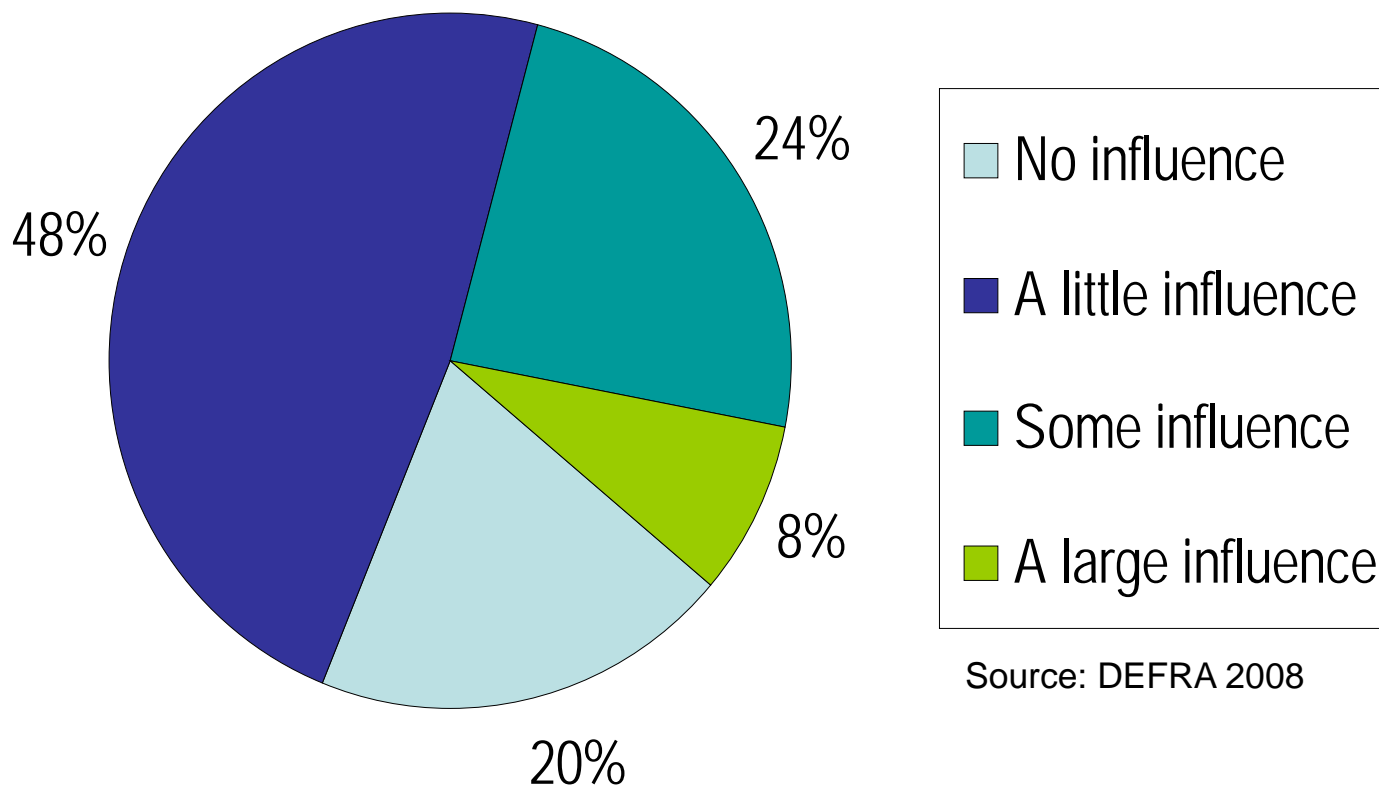
Source: DEFRA 2008

How concerned are you?



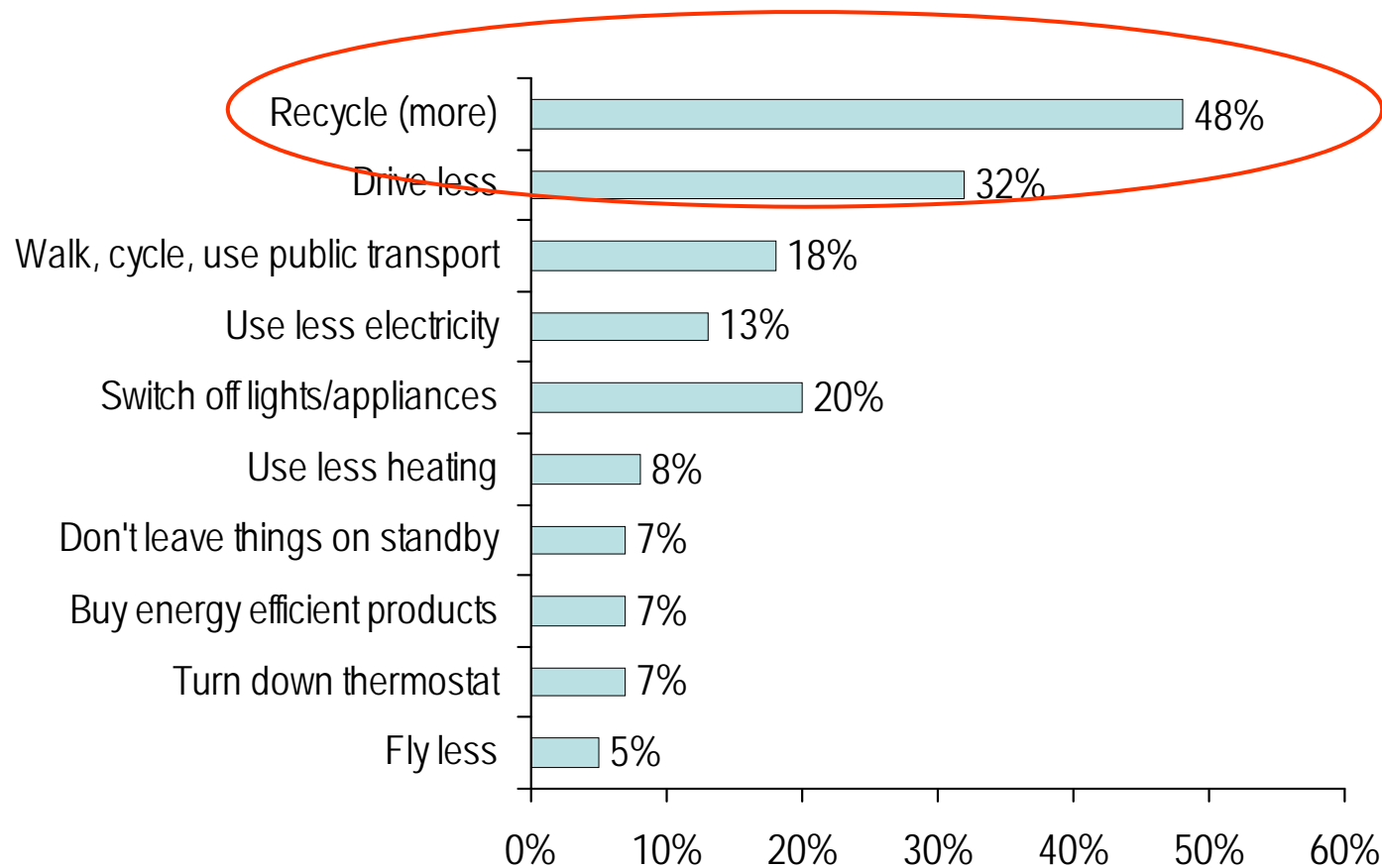
Source: MORI 2008

Can you slow climate change?



Source: DEFRA 2008

What actions could you take?



Source: DEFRA 2008

Building momentum

**We must improve knowledge
and deal with perceptions**

CRC – do you know about it?

Mandatory trade scheme in the UK

- first compliance year April 2010 – March 2011
- 80% reduction on GHG emissions by 2050

Approximately 5,000 affected organisations

- Large energy users
- Multiple sites
- Large fleets
- Public buildings
- Public sector service providers

CRC – do you know about it?

 Password
Reminder

- HOME
- NEWS & ANALYSIS
 - NEWS HOME
 - SEARCH NEWS
 - TODAY'S PAPERS
 - ANALYSIS
 - SPECIAL FOCUS
 - BLOGS
 - RSS FEED
- JOBS
- DIRECTORY
- LIST RENTAL
- AWARDS
- SUBSCRIBE
- EVENTS
- PROCUREMENT GUIDE
- BUSINESS
- CAREERS
- CITIZEN ENGAGEMENT

 RSS NEWSFEED

 XML SITEMAP

Councils sign up to carbon-cutting pledge

Nick Appleyard

Ten councils have pledged to cut their carbon emissions by a tenth in the next year by committing to what is being touted as the UK's 'biggest collective effort' to tackle climate change.

The local authorities – Islington LBC, Richmond LBC, Oxford City Council, Kirklees Council, West Sussex CC, Stroud DC, Eastleigh BC, Slough BC, Greenwich LBC and Hackney LBC – have signed up to the 10:10 campaign, joining pledges made by individuals and organisations nationwide including the Government's full cabinet.

Cllr [Alexis Rowell](#), coordinator of 10:10 Councils and chair of Camden's sustainability task force, explained that the methodology for local government was slightly different.

Rowell said: 'We're asking councils to set a NI 185 baseline between now and the end of the year. It's not quite NI 185 because we're not asking for schools or outsourced emissions data – we're only asking for buildings and transport that councils have control over.'


Cllr [Geoff Acton](#), Richmond's cabinet member for environment, said that the borough would do all it could to make its buildings, vehicles, streetlights and services more environmentally friendly in order to achieve the 10% cut.

'Local government has a crucial role to play in the fight against

LocalGov
Your authority on UK local government

LocalGov
newsletter
SIGN UP

 E-mail to a friend

 Printable version

 Del.icio.us  StumbleUpon

 facebook  YouTube

 twitter  digg

related articles

DONCASTER CONDUCTS REVIEW
FOLLOWING TORTURE ATTACK

COMMISSION LAUNCHES
'BOOMERANG BOSSES' PROBE

MEMORY STICK VIRUS COSTS
EALING £500,000

HAVING ZERO AMBITION WILL PAY
DIVIDENDS FOR SCOTTISH
RECYCLERS

FOUR SEE A FAR WAY OF



The UDITE
Awards
2009

Monday
October 5th 2009
[Click here to learn more](#)

My big themes

- **Climate Change is real and waste management has a significant role to play**
- **We need to communicate the realities NOW**
- **Target setting is critical to build momentum**
- **We must communicate to bring the public and commerce with us**
- **We must make informed decisions about services**
- **We must design & procure services that are carbon friendly**
- **We must put carbon at the heart of our strategic position for the next 30 years**
- **We must walk the walk.... Lead by example!**

Now for the panel.....



Dr Adam Read

Practice Knowledge Leader - Waste Management & Resource Efficiency

adam.read@aeat.co.uk

07968 707 239