

Maternity Matrix Tool

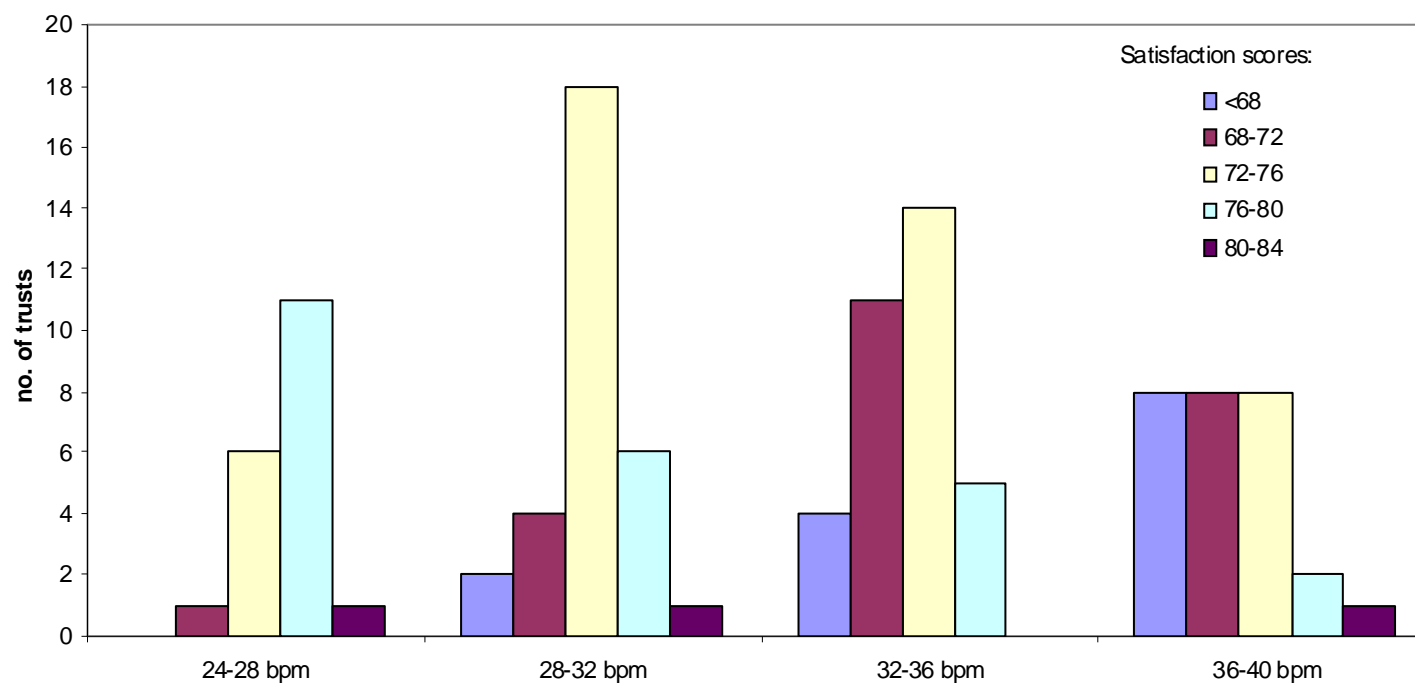
Suzanne Truttero
Midwifery Advisor
Department of Health

Background to Matrix Project

- Birth:Midwife ratio used as proxy measure on quality of maternity services
- Office of the Chief Analyst (DH) asked to look at the correlation between birth to midwife ratio with quality, effectiveness and user experience
- Found no strong association with quality and effectiveness but some association with user experience
- Work underway to look at developing matrix to support provider service design

Metrics

Distribution of overall satisfaction by births per midwife (bpm) ratio - England, 2007

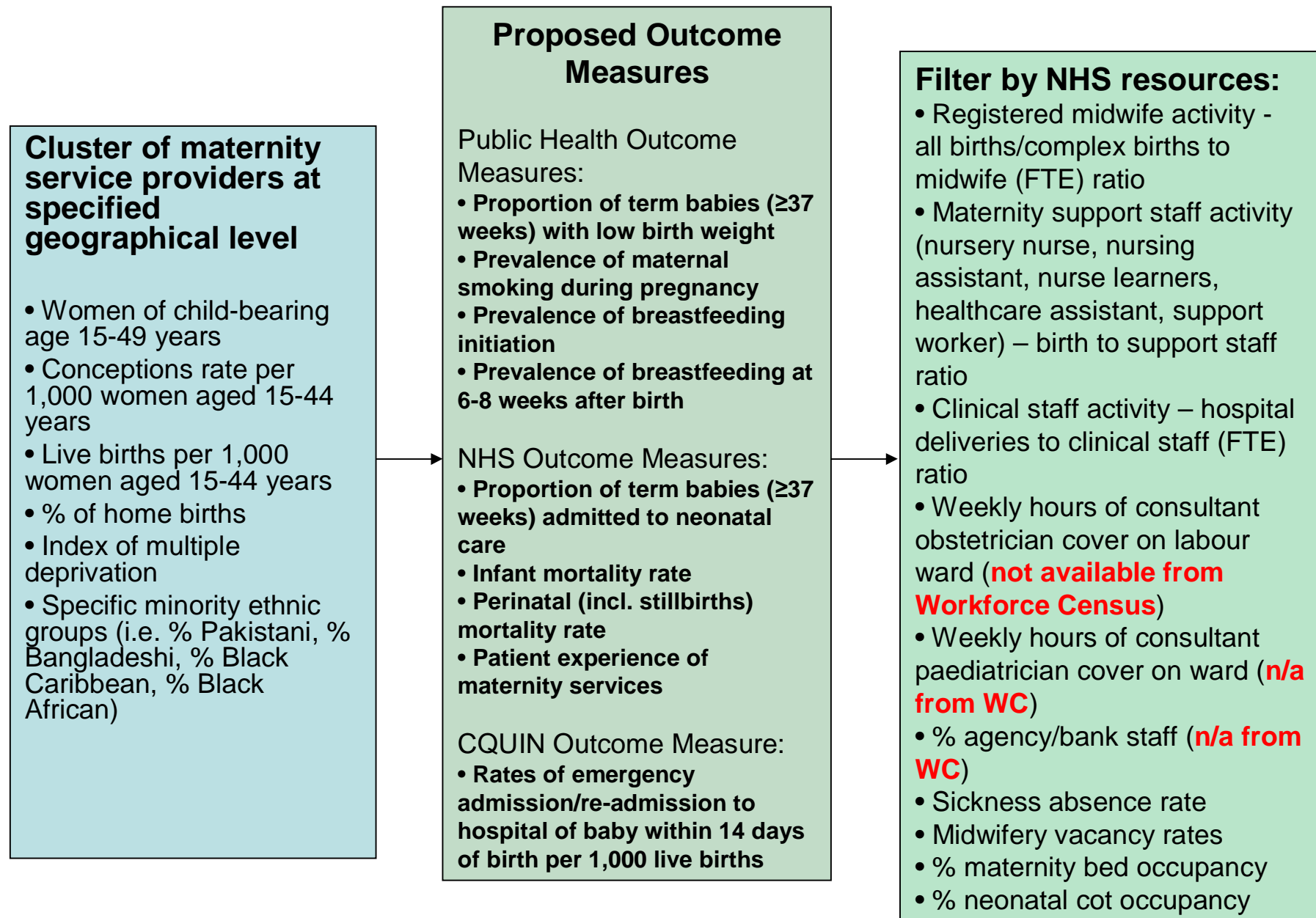


Sources: HES, Healthcare Commission

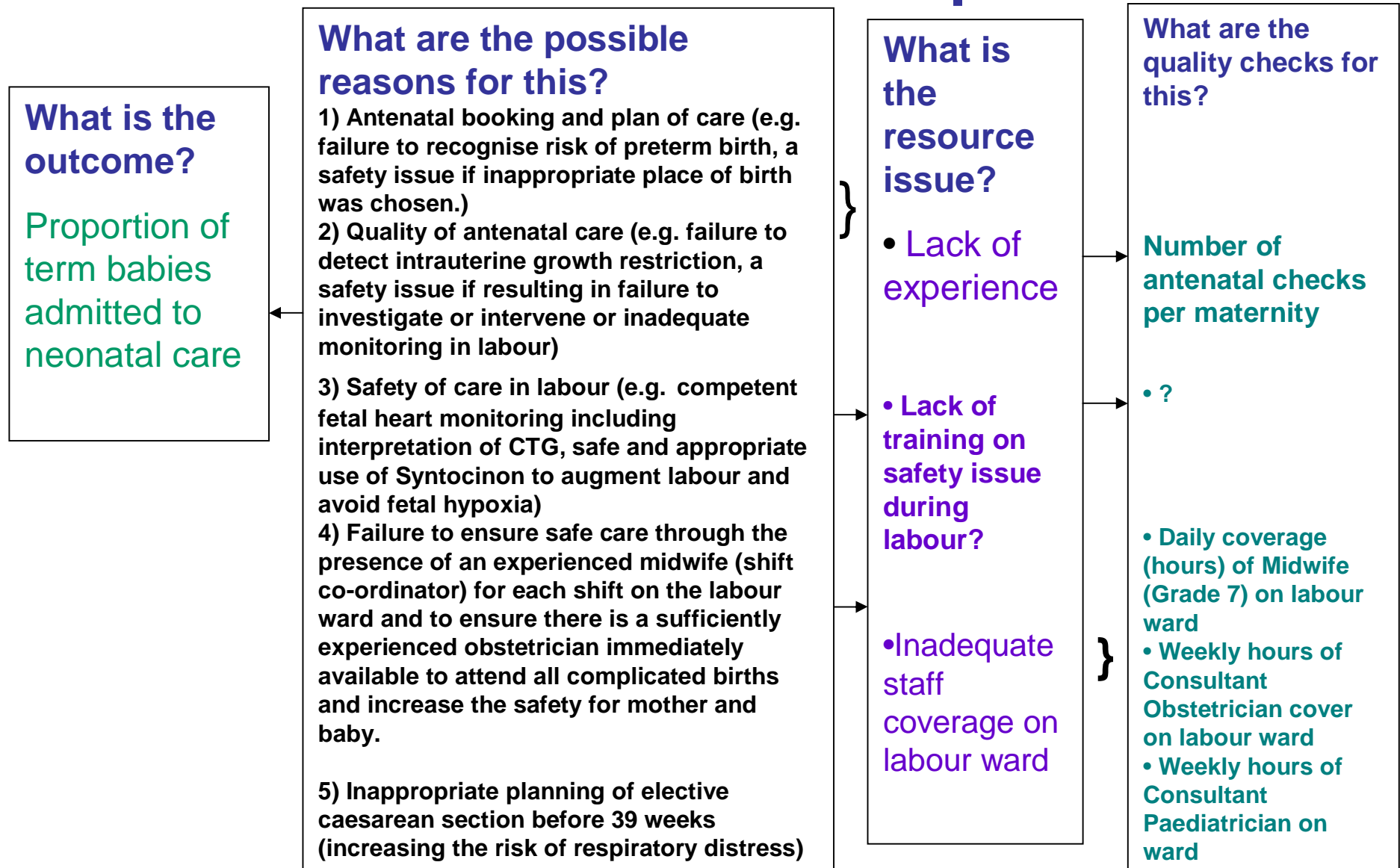
Purpose of Tool

- Benchmarking tool
 - Enables providers to assess themselves against similar providers
 - Links into NHS outcomes that NHS CB will be held accountable for and potentially public health outcomes that Director of Public Health will be accountable for
- To aid providers in identifying gaps in resources used for provision of services for entire maternity care pathway
 - Helps providers within 'clusters' to compare outcomes and identify improvements in level and utilisation of resources (e.g. skill mix and mobilisation of teams)
- Could aid the development of maternity networks by bringing in providers with the right expertise for different parts of the care pathway for a given geographic area

Current Model Design



Relationship between NHS resources and outcomes: an example



Prototype to show concept

| | | SOCIO- ECONOMIC FACTORS | | | | | | | | OUTCOMES | | | |
|-----|--|------------------------------------|--------------------------------|---|-------------------|---|-------------------------------------|-----------------------------------|--|----------------|-----------------------------------|-------------------------------------|--|
| | | Index of Multiple Deprivation 2007 | % unemployment (aged 16+) 2005 | Population density (number of persons per hectare) 2001 | % ethnic minority | Average number of weeks pregnant when women are first seen (HCC data) | Percentage of women younger than 19 | Percentage of women older than 35 | % women who are smokers when they book | How different? | % women not receiving NICE# scans | Maternal Morbidity 5- good, 1- poor | Women's satisfaction with current care (% satisfied or very satisfied) |
| | Choose Trust: | | | | | | | | | | | | |
| RXC | EAST SUSSEX HOSPITALS NHS TRUST | 19.5 | 5.2% | 10.9 | 1.0% | 6.9 | 4.7% | 22.2% | 17.5% | 0.00% | 14.8% | 3 | 73.6% |
| | Similar Trusts (i.e. which other Trusts are most similar in terms of socio-economic factors?): | | | | | | | | | | | | |
| RWJ | STOCKPORT NHS FOUNDATION TRUST | 19.5 | 4.0% | 20.0 | 2.7% | 7.3 | 4.3% | 21.2% | 16.0% | 1.20% | 17.4% | 4 | 79.2% |
| RJR | COUNTRESS OF CHESTER HOSPITAL NHS FOUNDATION TRUST | 19.0 | 4.0% | 8.7 | 1.9% | 7.3 | 3.8% | 23.2% | 23.3% | 1.58% | 21.9% | 4 | 74.9% |
| RM4 | TRAFFORD HEALTHCARE NHS TRUST | 20.9 | 3.9% | 20.9 | 6.2% | 7.4 | 4.2% | 21.7% | 18.8% | 1.65% | 17.1% | 4 | 72.5% |
| RVY | SOUTHPORT AND ORMSKIRK HOSPITAL NHS TRUST | 26.4 | 5.8% | 14.8 | 1.9% | 7.0 | 4.0% | 21.0% | 18.8% | 1.68% | 21.2% | 5 | 74.6% |
| RAJ | SOUTHEAST UNIVERSITY HOSPITAL NHS FOUNDATION TRUST | 16.7 | 4.7% | 24.7 | 1.7% | 7.1 | 3.6% | 20.2% | 13.9% | 1.93% | 13.8% | 3 | 75.6% |
| RN7 | DARTFORD AND GRAVESHAM NHS TRUST | 14.3 | 5.4% | 8.6 | 3.0% | 7.1 | 3.9% | 17.0% | 17.7% | 2.01% | 12.0% | 4 | 71.9% |
| RPR | ROYAL WEST SUSSEX NHS TRUST | 12.9 | 4.1% | 11.2 | 1.9% | 7.3 | 3.0% | 24.4% | 15.2% | 2.16% | 15.0% | 5 | 77.6% |
| 5PP | CAMBRIDGESHIRE PCT | 13.6 | 5.2% | 6.2 | 2.7% | 7.5 | 3.7% | 19.8% | 12.2% | 2.30% | Missing data | Missing data | Missing data |
| RQW | THE PRINCESS ALEXANDRA HOSPITAL NHS TRUST | 14.0 | 4.0% | 10.3 | 3.1% | 7.1 | 2.4% | 21.7% | 13.1% | 2.32% | 28.6% | 3 | 74.9% |
| RXH | BRIGHTON AND SUSSEX UNIVERSITY HOSPITALS NHS TRUST | 19.7 | 5.6% | 19.8 | 2.2% | 7.0 | 2.7% | 259.5% | 13.3% | 2.40% | 19.9% | 3 | 70.7% |

Next stage

- Additional sources of information to feed into tool
- Development of outcome measures and how these relate to resources
- Feedback from potential users on their requirements to assist development work
- Host and management of tool

Suzanne.truttero@dh.gsi.gov.uk