

The Art of Midwifery - can creative images of birth enhance holistic care?

Elaine Uppal, Helen Knowles & Sarah Davies
RCM Conference – GMex, November 2010



Overview

- Briefly consider use of art in midwifery
- Summarise our experience & student evaluation of art collaboration
- Consider how more aesthetic & creative ways of learning can:
 - Enhance students' philosophy of birth
 - Promote holistic care & normality

Background

- Student midwives at Salford University have been involved in interactive sessions with artists & visited the Birth Rites exhibition
- Birth Rites collection is currently on display between RCOG in London & Salford University School of Nursing & Midwifery
- Some students want to continue this type of work in their leisure time & have won a small bid to fund materials etc

Art forms

- Narrative
 - Poetry
 - Stories
- Images
 - Paintings
 - Photographs
 - Drawings
- Music
- Sculpture/pottery
- Crafts
- Film
- Theatre
- Dance

www.thebusinessofbeingborn.com



FROM EXECUTIVE PRODUCER RICKI LAKE
AND FROM DIRECTOR ABBY EPSTEIN

THE BUSINESS OF BEING BORN

WWW.THEBUSINESSOFBEINGBORN.COM

You will never look at giving birth the same way.



SHE'S NOT
A CELEBRITY.
SHE'S A STAR



SHE'S NOT A SINGER. SHE'S A STAR

Look at my friend - she's unbelievable.

She's totally devoted to that baby and I just hope I can be as strong when it's my turn. By choosing to breastfeed, she's protecting her baby against stomach problems and reducing her chances of getting ovarian cancer.

That's my best friend feeding her baby. She's not a super model, a pop idol or a famous actress - she's a star.



beastar.org.uk
24hr Support line 01254 772929

breast feed
be a star

SHE'S NOT A MODEL. SHE'S A STAR

Look at my girlfriend - she's gorgeous.

Just when I thought I couldn't love her any more, our son arrived and I fell even deeper. By choosing to breastfeed, she's protecting him against ear infections whilst burning up to 500 calories a day.

That's my girlfriend feeding our baby. She's not a super model, a pop idol or a famous actress - she's a star.



beastar.org.uk
24hr Support line 01254 772929

breast feed
be a star

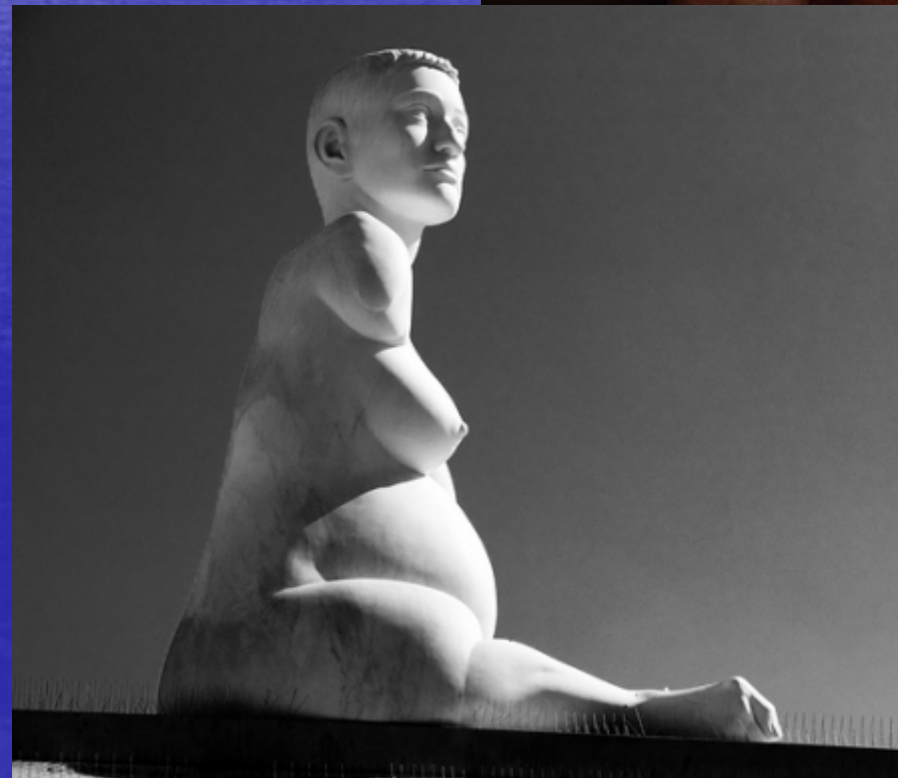
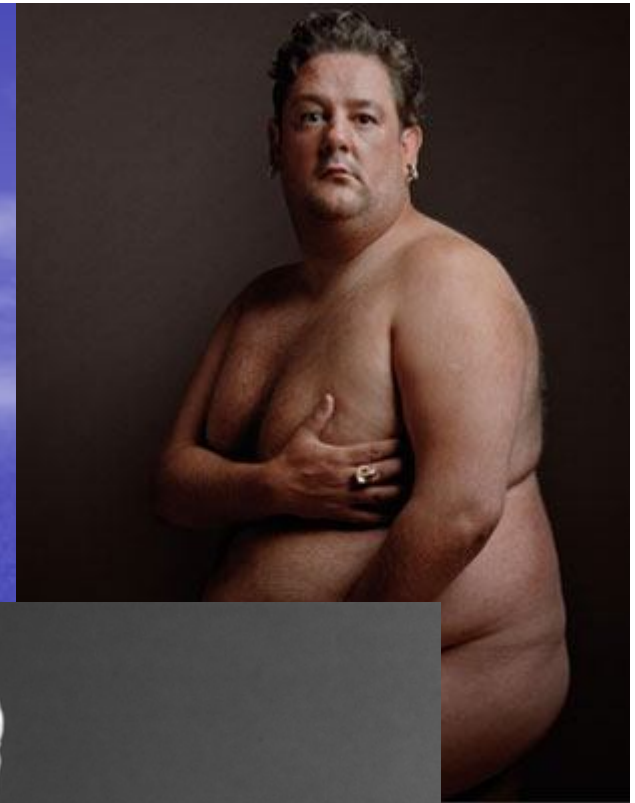
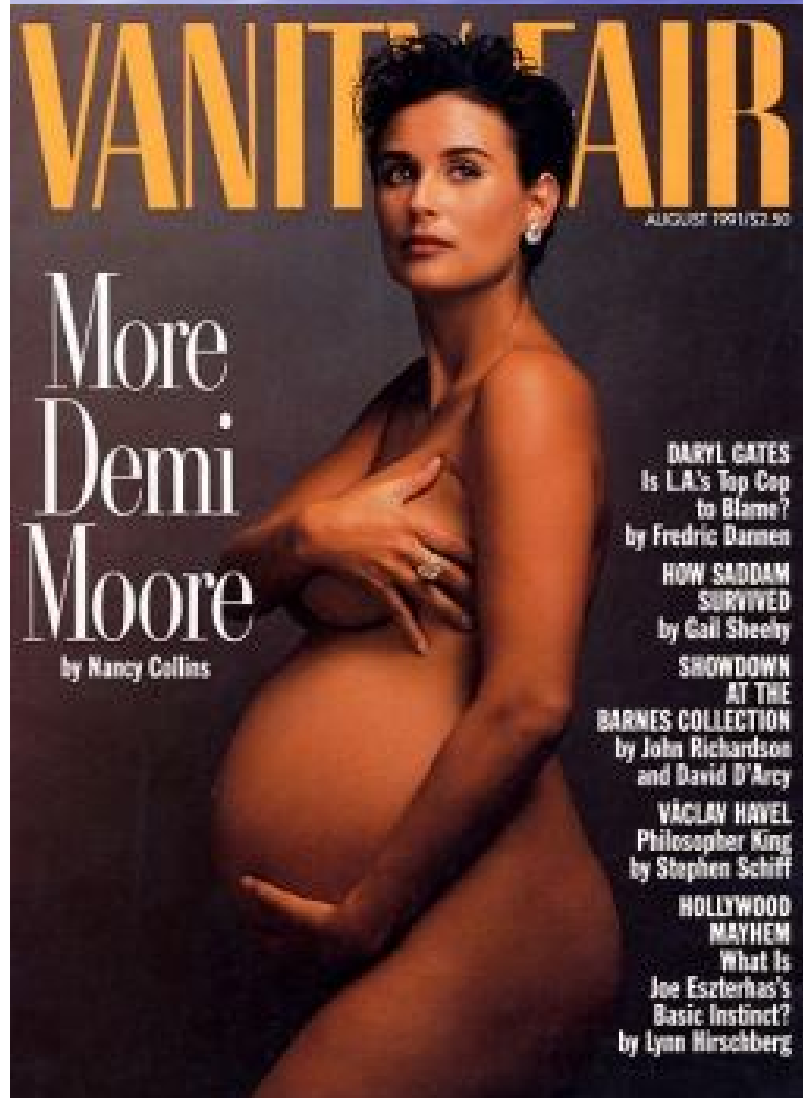


East Lancashire **NHS**
Teaching Primary Care Trust

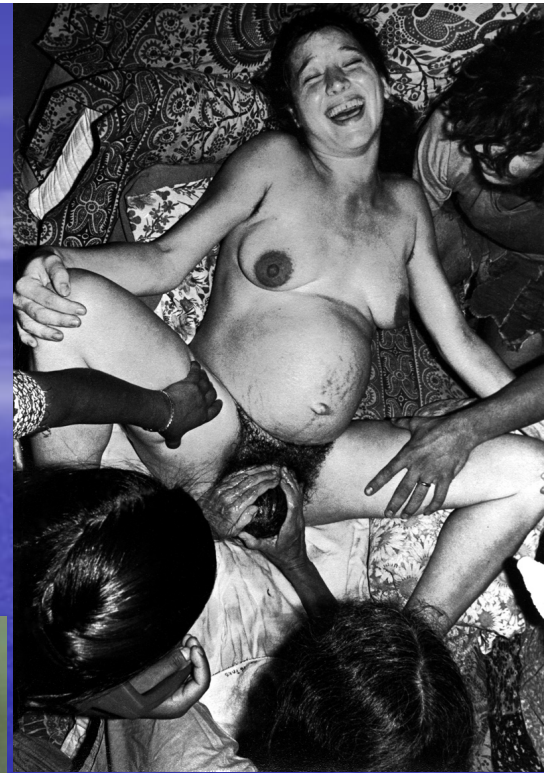


Blackburn with Darwen **NHS**
Teaching Primary Care Trust

Pregnancy



Birth





P
O
S
T
N
A
T
A
L



Neonatal



Our experiences

- Introductory art sessions with artists & art students
- Visit to Birth Rites exhibition
- Workbook & evaluation
- Celebrate birth event

Evaluation – art collaboration

- How could you relate it to your studies?
- What difficulties might this present?
- What did you like/dislike about the introductory art session?
- Would you be interested in developing further links and projects?
- What are your thoughts about the Birth Rites Exhibition?

A close-up photograph of a man and a woman smiling warmly at each other. The man is on the left, looking down towards the woman on the right. The woman is looking up at him with a joyful expression. The background is a plain, light color.

Birth Rites presents

Born

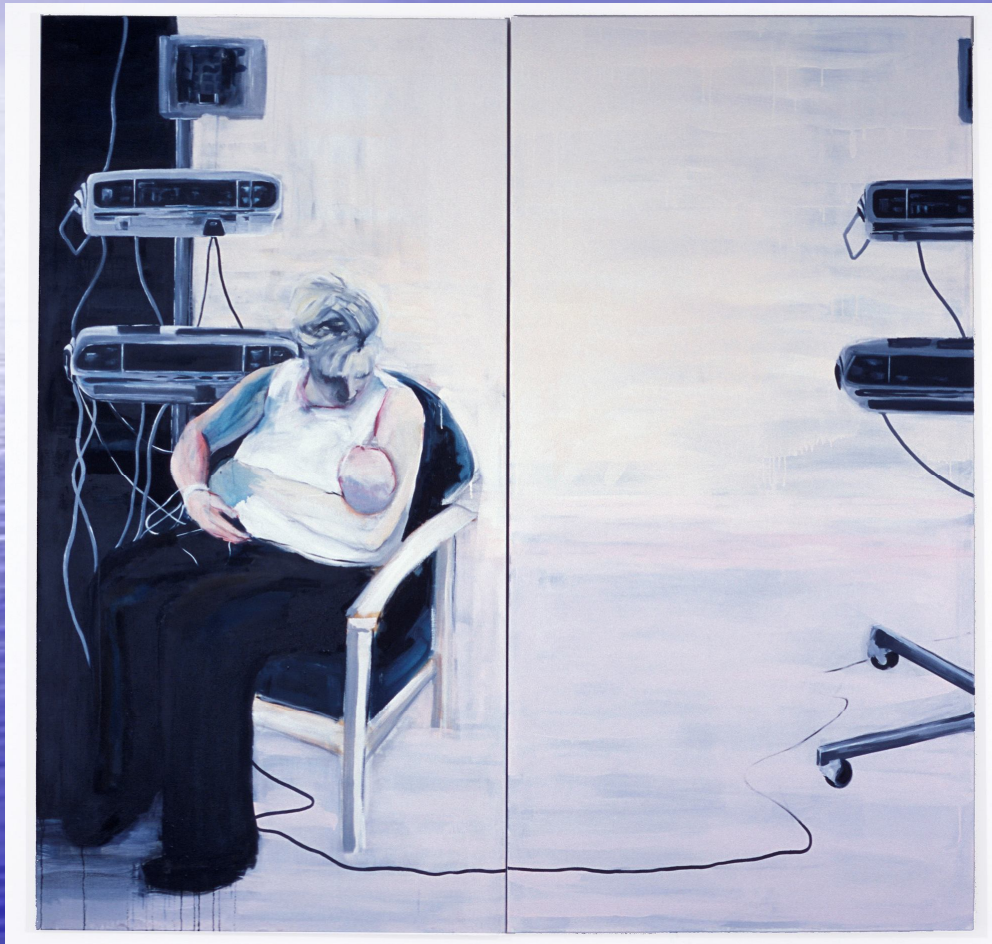
A film by Andy Lawrence
in collaboration with Judith Kunz

'Ur-form' terracotta
Birth Rites Collection Ping Qiu

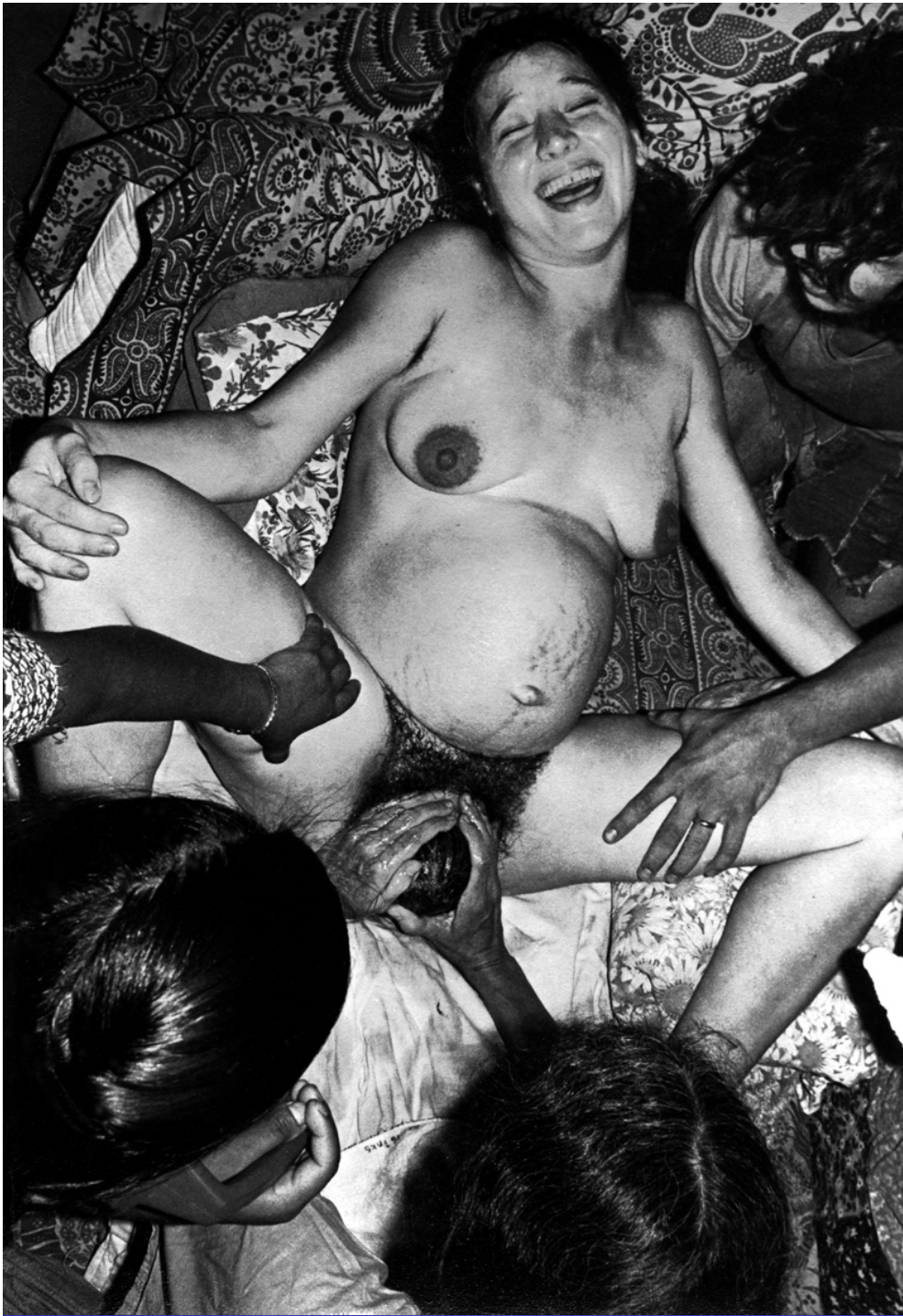


'Contact' Birth Rites Collection

Suzanne Holtom



- A moment of quiet & calm amidst the chaos (9)
- Very medicalised & harsh. However, you can see the strong bond/attachment between the mother & baby – which is instinctive & unaffected (18)



- *'Unmedicated, first-time mother (Therese), experiencing birth ecstasy'*
- Birth Rites Collection from *Ina May's Guide to childbirth* ink-jet print
- Hermione Wiltshire 2008

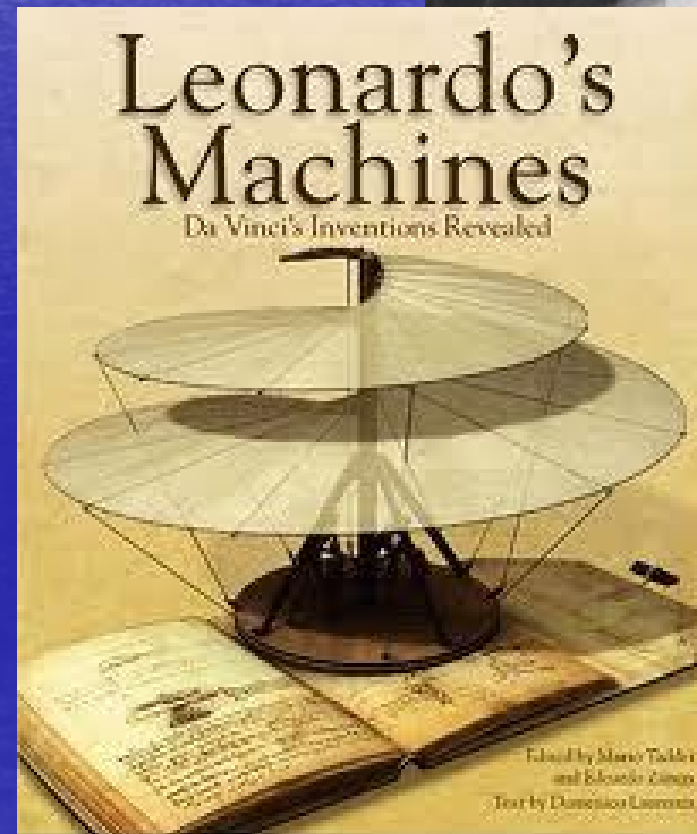
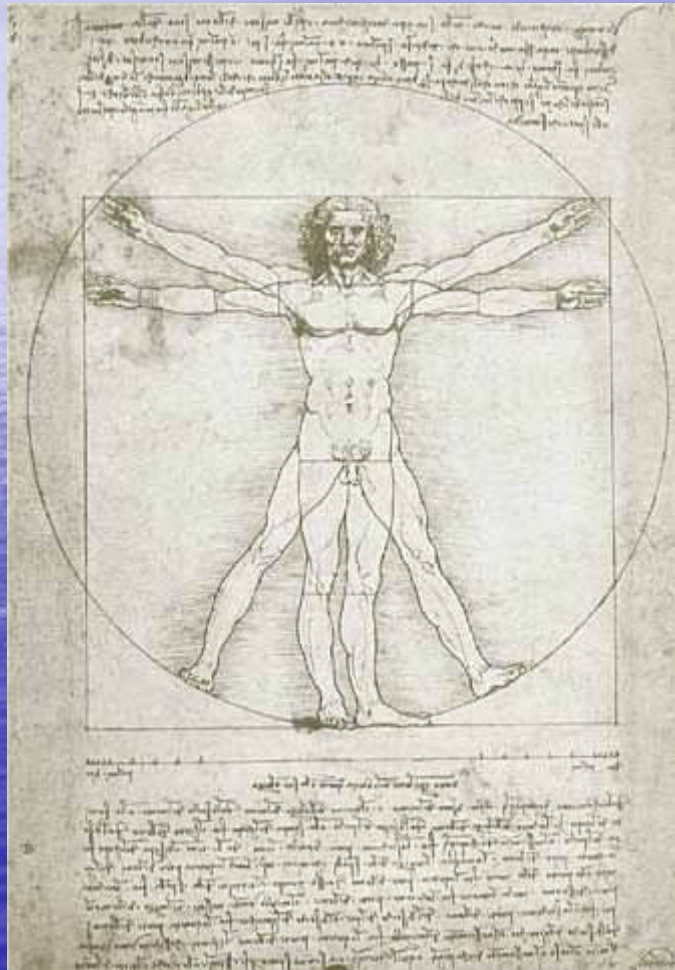


Conclusions

- Creativity can be challenging, but important in everyday life
- 'every child is an artist, the problem is how to remain an artist once he grows up' Picasso

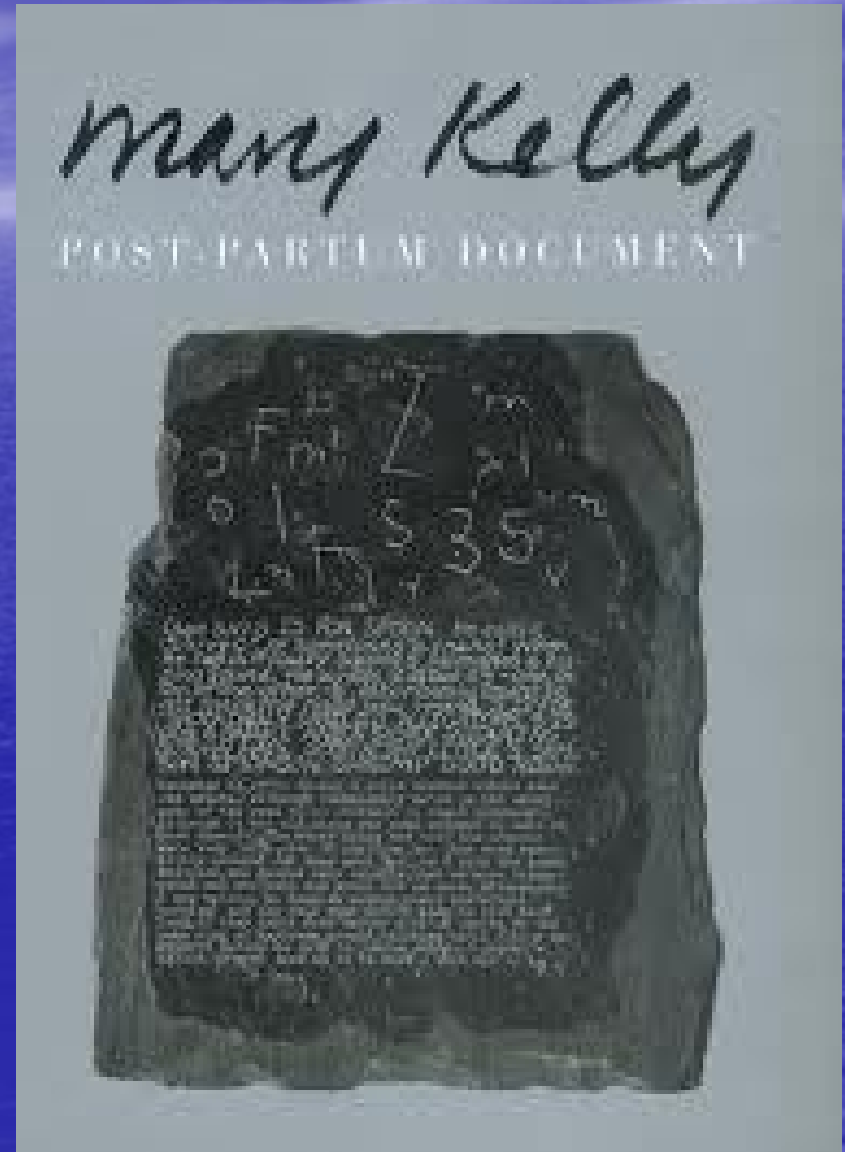


Whole Brain Thinking



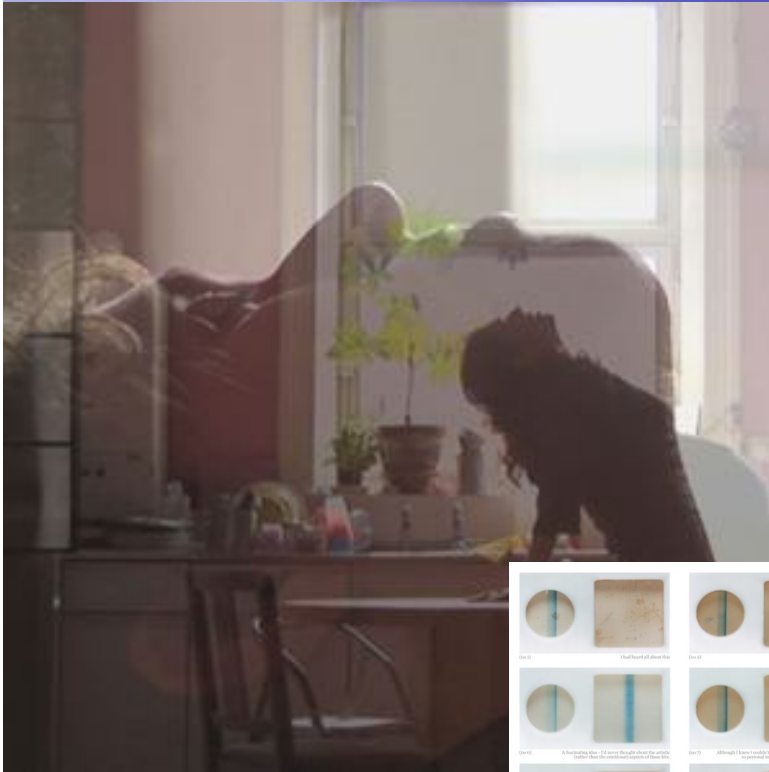
Future Activities

- New pieces to be added to collection following recent Birth Rites competition – LAUNCH EVENT
- Visit to Mary Kelly retrospective '*Post-Partum Document*' Whitworth Gallery
- Students would like to explore philosophy of birth through media such as: photography, theatre production, pottery, painting & drawing



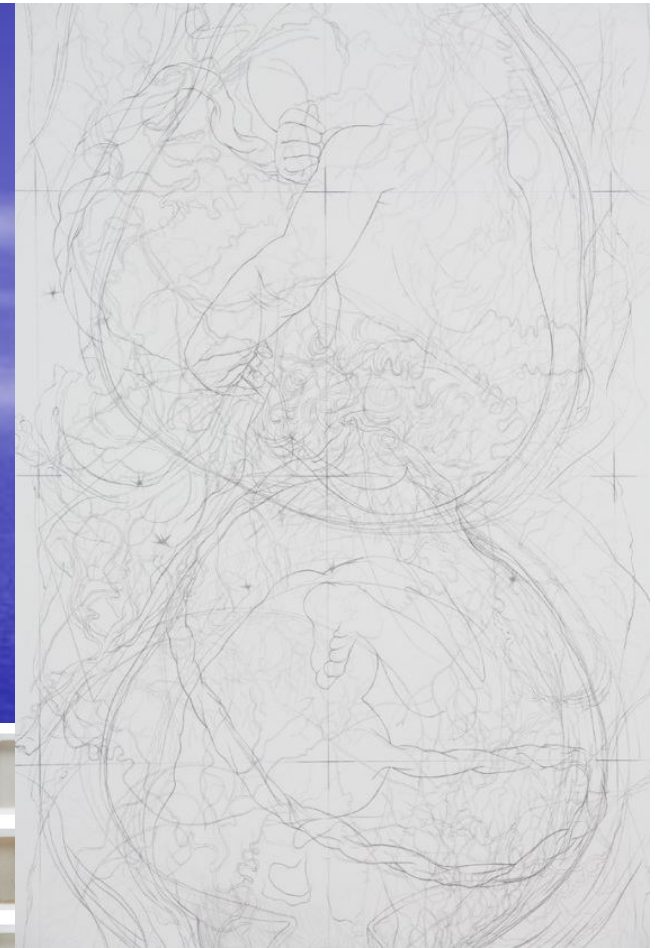
'Cracks Threshold'

Annabel Newfield



'Private View'

Liv Pennington



'Gravid Uterus Twin'

Matt Collier

www.patrickmillard.com



Edema Constraint Pulse, 2008. Carbon Pigment Print



Elaine Uppal

0161 295 6436

e.uppal@salford.ac.uk