

worldclasscommissioning

adding life to years and years to life

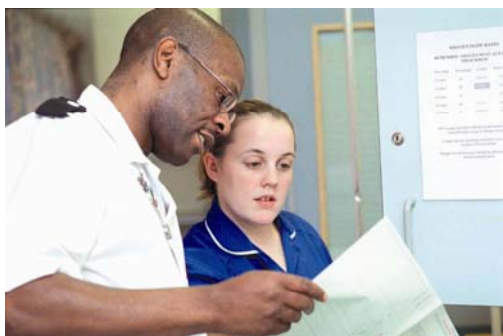
Gary Belfield

Acting Director General

Commissioning & System Management

Department of Health

**Strengthening commissioning
arrangements**



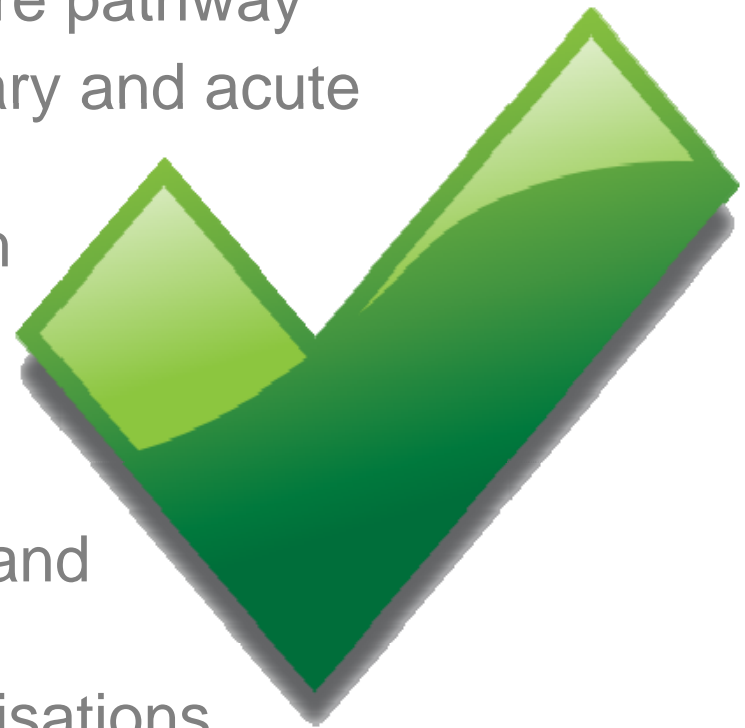
Integrating models of commissioning and delivery
of health and social care services

What do we mean by integration ?

- Integration may include different partners and services working together to ensure that individuals get the right treatment and care delivered in an appropriate and effective way.
- Models may include partners across health and social care, representing independent, public or third sector organisations and challenging traditional boundaries and care pathways.
- Integration can refer to partnerships, systems and models as well as organisations.

What do we mean by integration?

- horizontal integration across a care pathway
- vertical integration between primary and acute services
- integration between mental health services and acute services
- collaboration between health and social care
- collaboration between the public and private sectors
- partnerships with voluntary organisations.



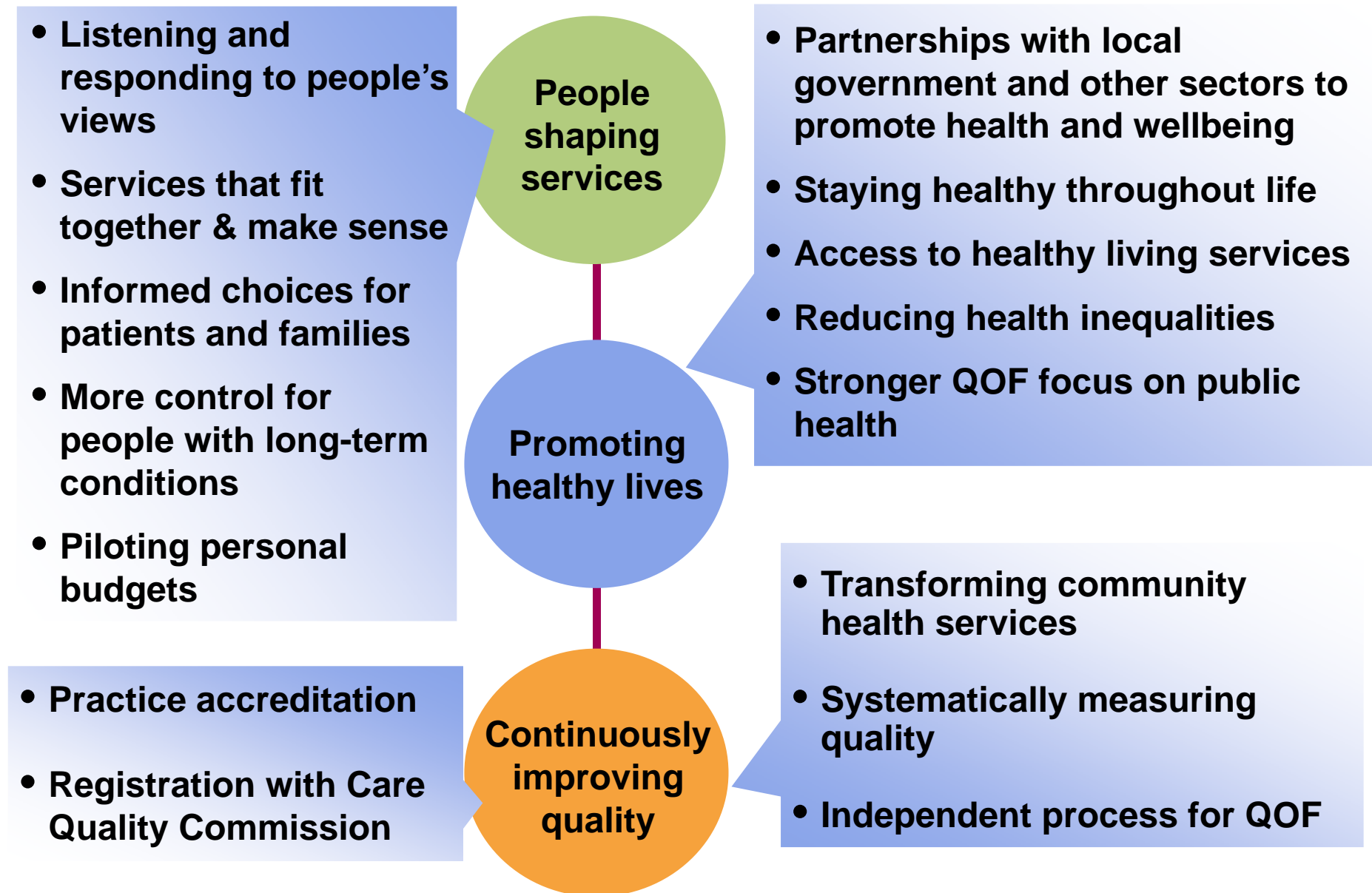
Why is integration important?

- Better integration has the potential to deliver some of our key objectives for improving health and care services including:
 - better quality of care
 - greater personalisation
 - a shift towards health promotion
 - reduced inequalities.
- The PCT commissioner is central to the concept of integrated care.

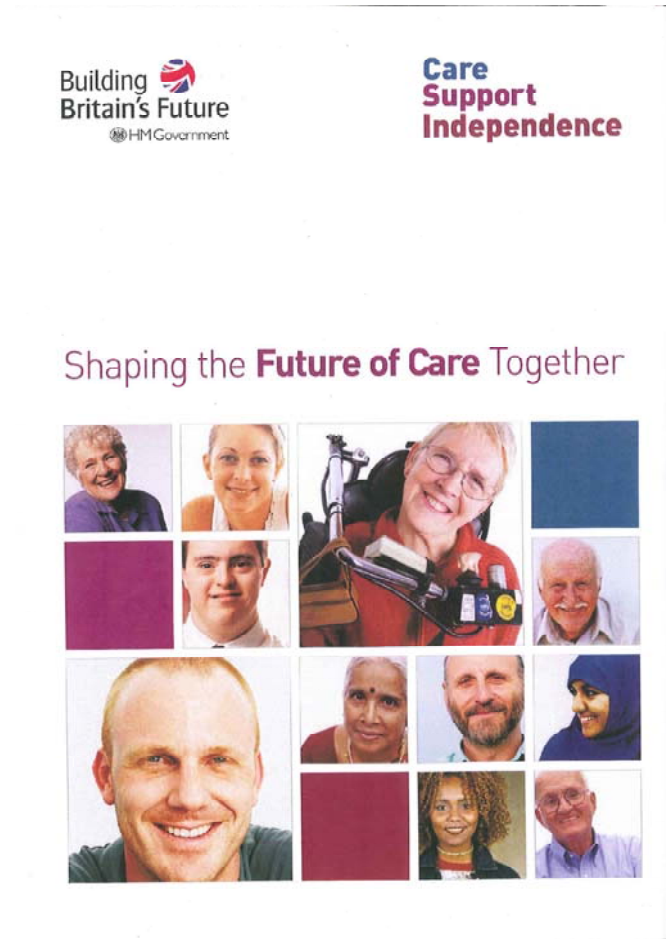
Integration – wider links

- The need for better integration is a theme that increasingly underpins the work of DH, the NHS and local government including:
 - the focus on quality, innovation, productivity and prevention
 - NHS Next Stage Review (NSR) Primary and Community Care Strategy (PCSS)
 - the concordat ‘Putting People First’
 - Transforming Community Services (TCS)
 - World Class Commissioning

Next Stage Review: Our vision for primary and community care



Shaping the Future of Care Together



- Green Paper on the vision for a new care and support system
- Highlights the current system challenges and the need for radical reform
- Sets out a number of consultation questions to help develop a National Care Service that is fair, simple, affordable and fit for the 21st Century
- Consultation is running until 13/11/09.

Integrated commissioning between health and social care

- Economic and quality drivers mean this needs to become a reality – building on existing examples of joint commissioning
- Total Place Pilots
- Integrated Care pilots
- Whole system demonstrator sites

Total Place Pilots

- Aims to provide innovative solutions to ensuring delivery of real efficiencies, savings and improved outcomes
- Lewisham PCT and LA
Focus of pilot: - minimising re-offending, managing ex offenders in the community, e.g. commissioning of health and social care, worklessness and unemployment

Whole system demonstrators

- Newham – one of 3 national pilots:
- 60/64 practices engaged
- Trialling telecare and telemedicine to :-
 - improve quality of care for patients and their carers
 - deliver efficiencies and cost effectiveness

Integrated Care Pilots

The programme of Integrated Care Pilots (ICP) aims to:

- explore and assess the impact of different integrated care models
- identify best practice/learning to share with others
- encouraging innovative thinking.

Integrated Care Pilots

- Tower Hamlets
- Integration of health and social care into locality based multidisciplinary teams supported by strategies for information management and relocation of services into the community

White Paper on Care and Support

- Two areas of work
 - Survey of existing approaches to integration
 - Discussion with health and social care in relation to
 - Achievements and complexities
 - Explore and test key themes of national policy work
 - Address user and patient experience
 - Improve common use of resources
 - Link with existing work on Total Place

The way forward

- DH, DCLG & DCSF collaboration
- Stronger partnership working building on existing examples
- More robust joint commissioning
- Improved co-ordination of regulator roles
- Raise the ambition of integration
- Agile forward facing organisations that can transform health gain

worldclasscommissioning
adding life to years and years to life



Gary Belfield
*Acting Director General
Commissioning & System Management
Department of Health*

