



Building a new partnership with schools and colleges

Nick Duggan
Children & Young People's Service
nick.duggan@sheffield.gov.uk

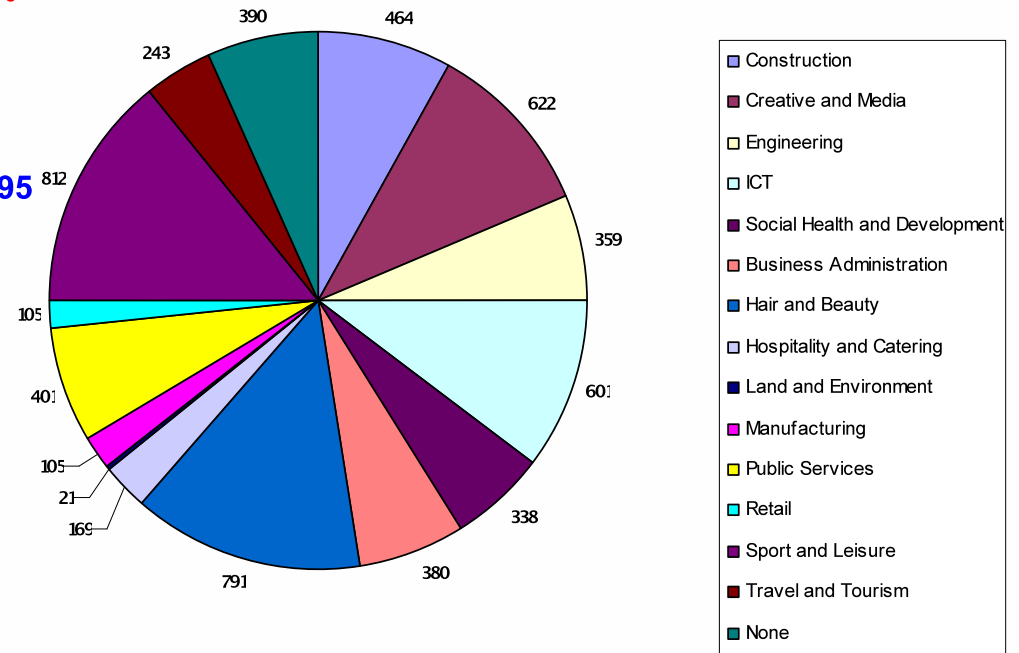
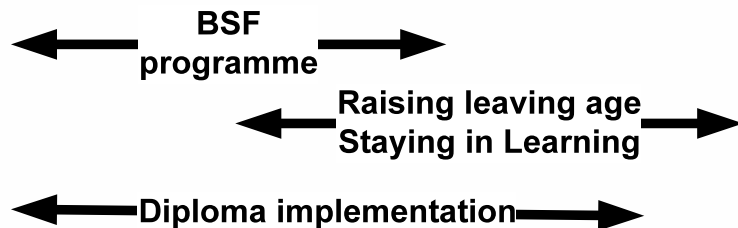
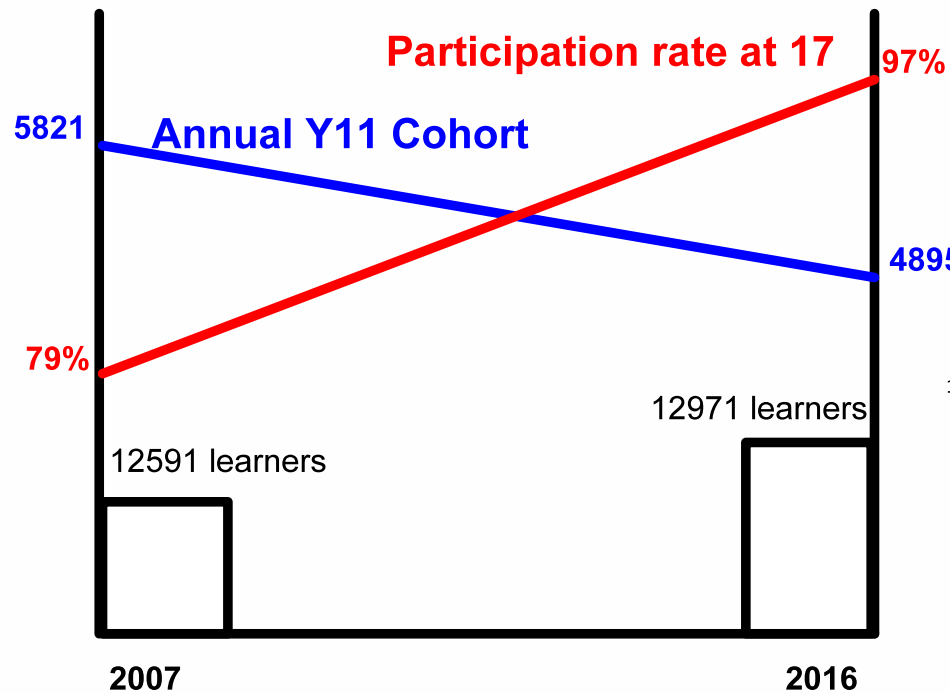


Sheffield *where everyone matters*

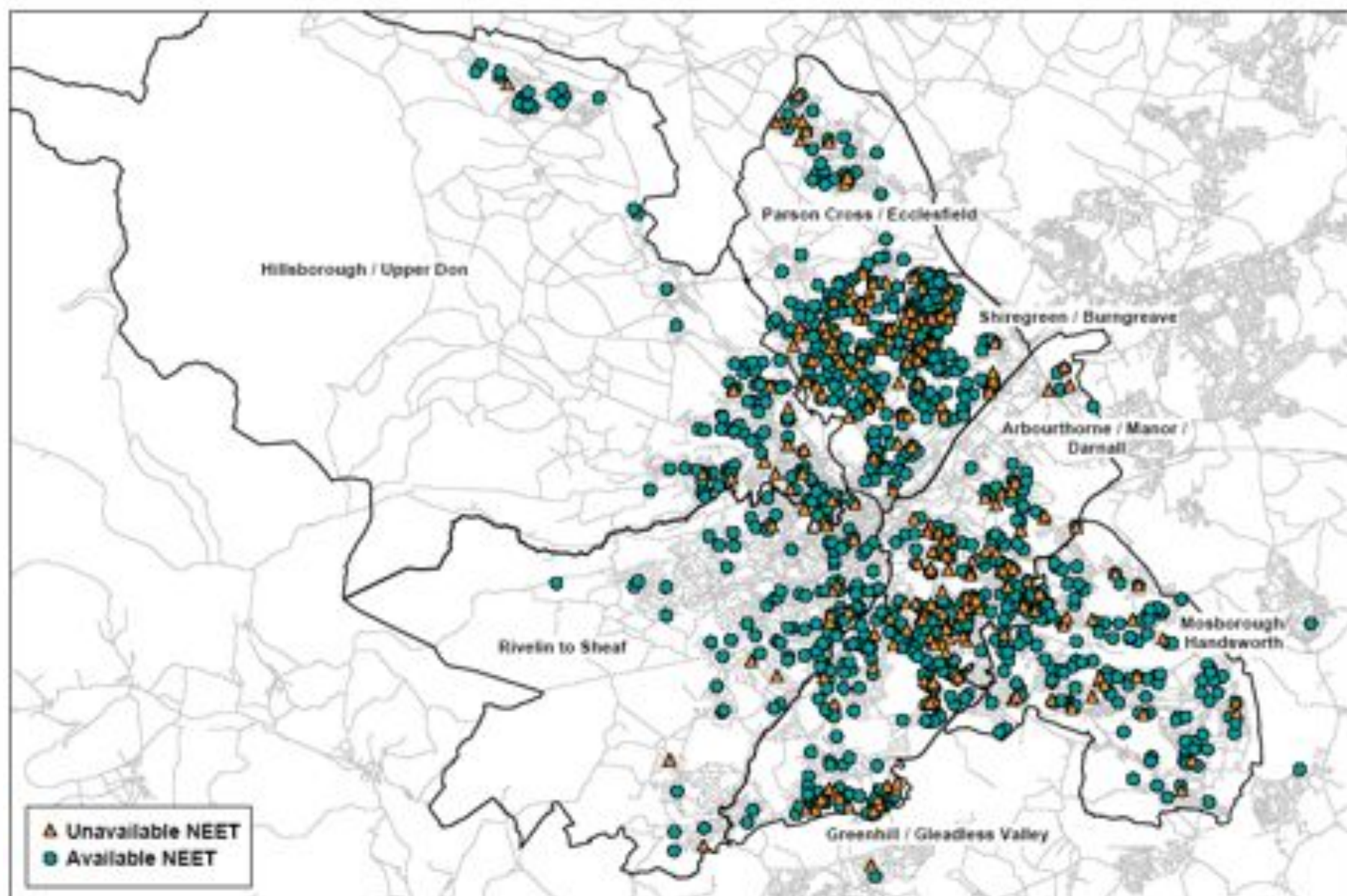


Places Planning

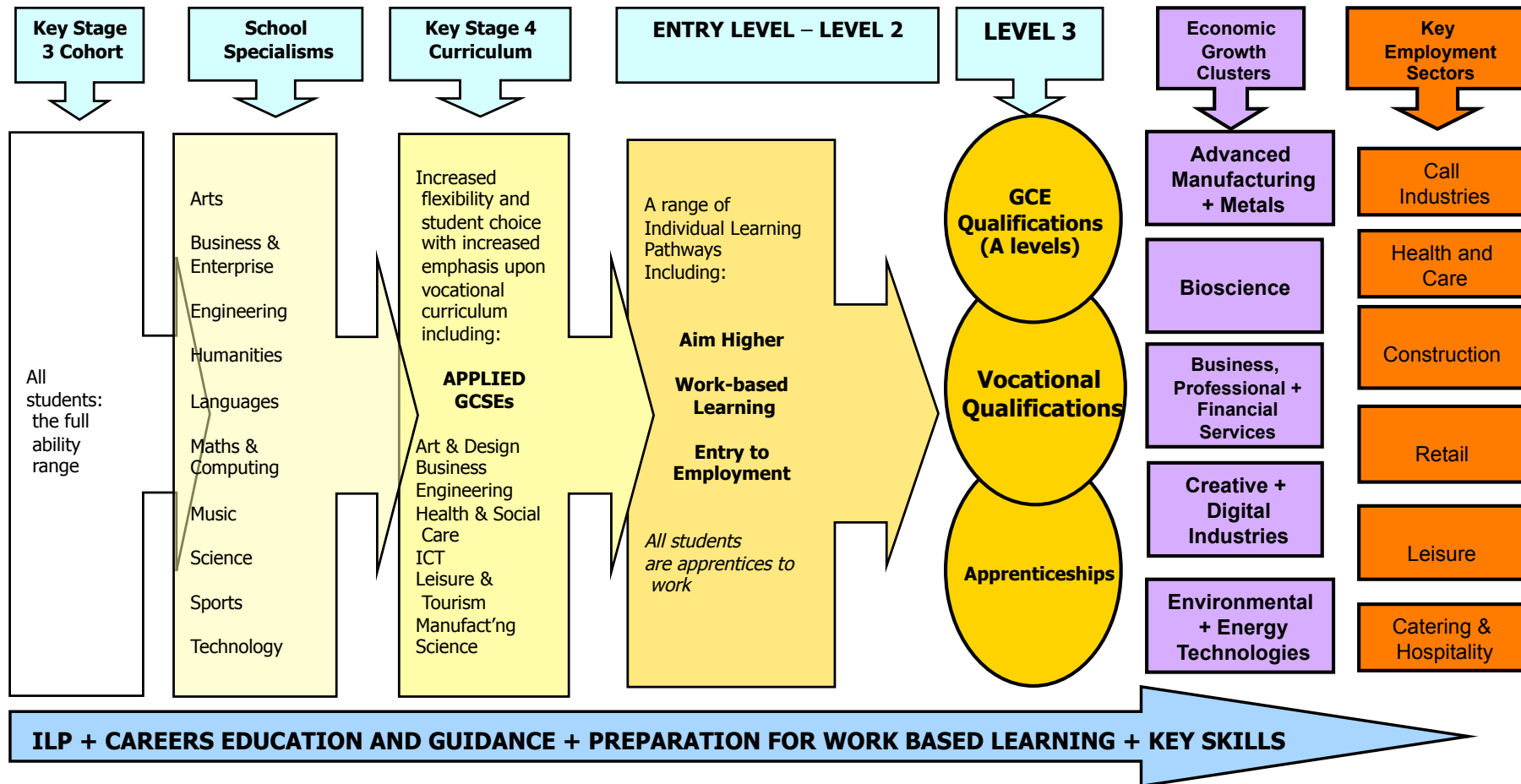
Securing the Entitlement: Planning (Demographics – aspiration and provision)



NEETs June 2009



14-19 Curriculum Transformation Progression along Specialised Learning Pathways



Statement of Need

- What are the local planning assumptions?
 - What are the national planning assumptions?
- = Statement of Need/14-19 strategy
-

Partnership Planning

- 6th Forms
 - 6th Form Colleges
 - Colleges
 - WBL Provision
 - Apprenticeships
 - ETE/FLT/NEETS
-

Planning together-Wider Commissioning

- 16-19 Planning Group
 - Coordinated Planning Cycles-earlier
 - Pre-16 trends
 - Prospectus/CAP/Local MI
 - Links IYSS,Connexions,EBP
 - LA`s as commissioners of wide range of services
 - What should the LA Dept look like ?
-

Commissioning Cycle 14-19

1.	Look at Outcomes for Young People	<ul style="list-style-type: none"> a. achievement at KS4 b. Level 2 by 19 c. Level 3 by 19 d. Reduction of NEET e. Equip them for economic future 	June to August
2.	Identify Target Group	<p>All 14-19 students Some sub-groups</p> <p style="text-align: center;">NEETS LDD</p>	
3.	Needs Assessment	<ul style="list-style-type: none"> - Curriculum managers (Half-termly) - Local Learning Partnerships (Termly) - Partners (LSC statement of need((Weekly) - Young People? - Parents? - Employers 	Sep to Dec
4.	Identify Resource and Set Priorities	<ul style="list-style-type: none"> - Pooled budget for 14-19 - 3 year plan required - Annual pricing structure for schools 	Pricing announced Dec
5.	Plan Pattern of Service	<ul style="list-style-type: none"> - Annual planning cycle - VSP (schools) - Post 16 (wider partners) 	<p>Dec Draft Plan</p> <p>Feb 1st Response</p> <p>Clients</p> <p>May Firm response</p>

6.	Decide how to commission effectively	<p>VSP ----- Tender</p> <pre> graph TD VSP[VSP] --- Tender[Tender] Tender --> SLA[SLA (schools)] Tender --> Contract[Contract (providers)] Post16[Post 16 - Allocate] --> 6thForms[6th Forms] Post16 --> College[College] </pre>	<p>April</p> <p>July</p> <p>Nov</p> <p>Nov</p>
7.	Commission	Review and monitor observation of teaching and learning contract compliance visits. De-commission.	April
8.	Plan for Workforce	<ul style="list-style-type: none"> - Supplier support – training events - Sharing of WFD - GAP Analysis 	Ongoing
9.	Market Development	<ul style="list-style-type: none"> - Existing suppliers – improvement - GAP Analysis - Review of MIS 	March
10.	Monitor and Review Services and Processes	<ul style="list-style-type: none"> - Annual review - Feedback of outcomes to constituents 	<p>May</p> <p>Aug</p>

14-19 FUNDING

- Core funding from the LA
 - Statutory or Safeguarding
 - Top slice from DSG
 - Flexible Funding Pot – ABG
 - justify with impact activity
 - Diploma
 - Development
 - Gateway start up
 - Revenue per learners
 - Young Apprenticeships
 - Enterprise
 - LEGI (Local Enterprise Growth Initiative)
 - Income from Schools and DSG
 - Income from events and consultancy
 - EBP contract
 - Schools Engagement Project/ Foundation Learning
 - ESF
 - Capital Funding
 - Post-16 Revenue and Capital
-

ISSUES

- Training Centres
 - Engineering
 - Construction
 - Red Tape Central
 - Health and Wellbeing
 - Projects
 - IBC (International Business Communications)
 - Staff
 - Top Slice 10%
 - Restructuring of the Service
 - IYSS – Targeted Youth Support
 - YOT – Positive Activities
 - Implications of LSC transfer
-

LOOKING FORWARD

- Short term Diplomas
 - Vocational Skill Programme Plus
 - Efficiency in contracting, health and safety and Q.A. across the LA
 - Schools / Employer Partnerships
 - NEETs / Foundation Learning
 - Reduction in Core
 - Reduction in off site work
 - Innovation and Creativity
-