



Cities Lecture

10 June 2010

Dermot Finch

Centre for Cities



New politics

centreforcities 





Cam-Clegg

centreforcities 



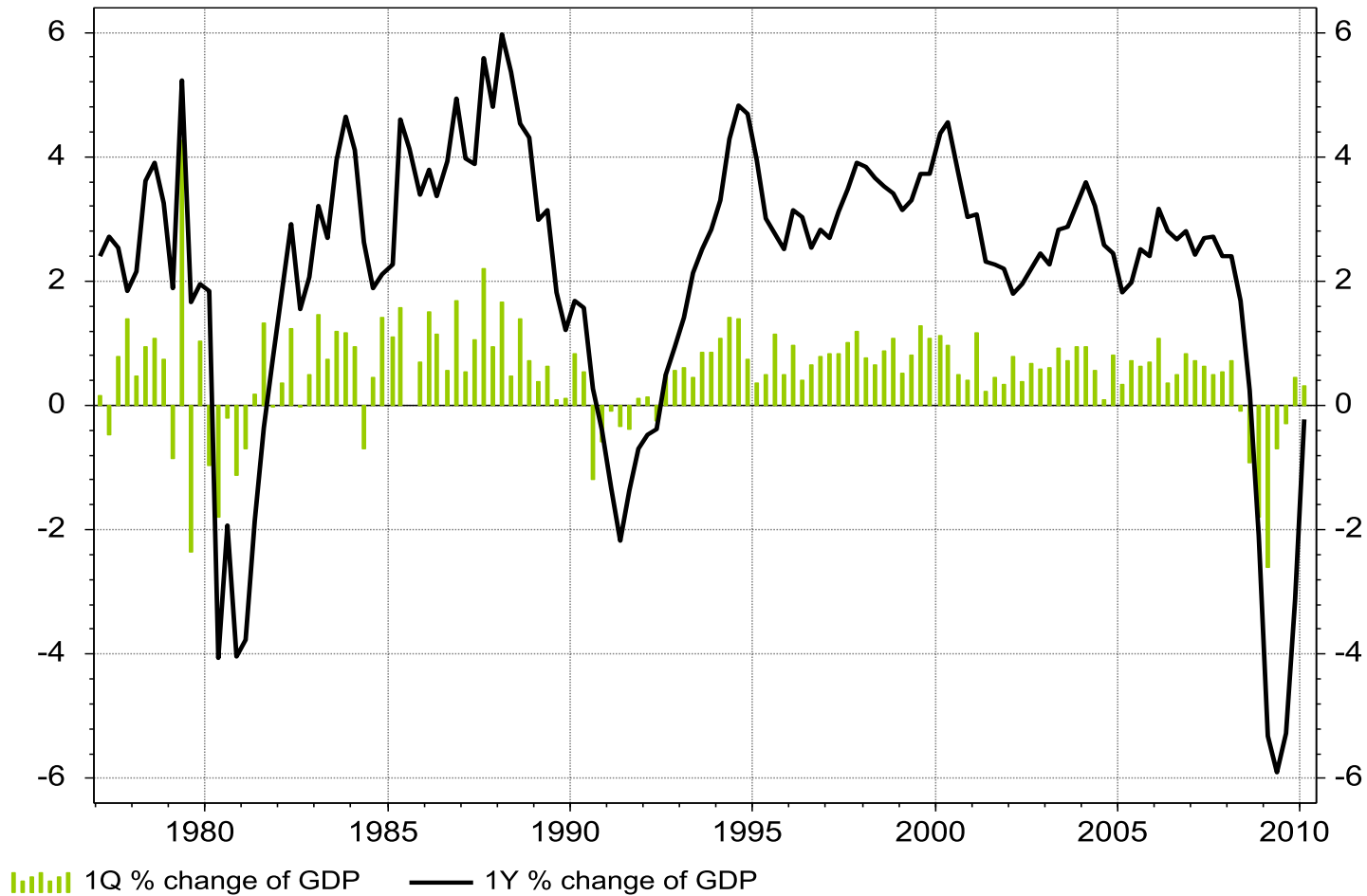


Next Labour

centreforcities 



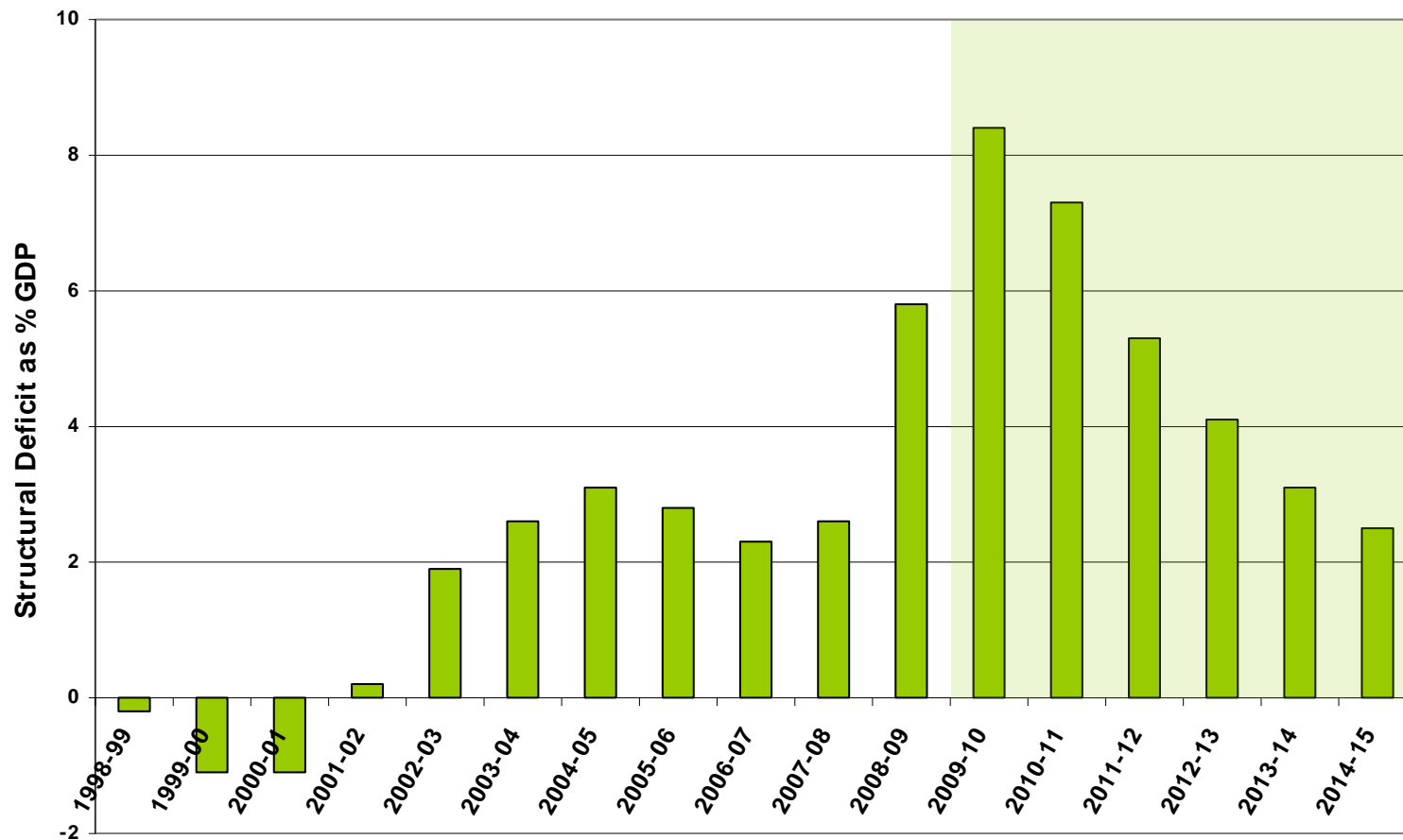
UK economy out of recession...just



Source: Thomson Reuters Datastream



Deficit reduction





Public sector cities

Public Sector Cities Exposed

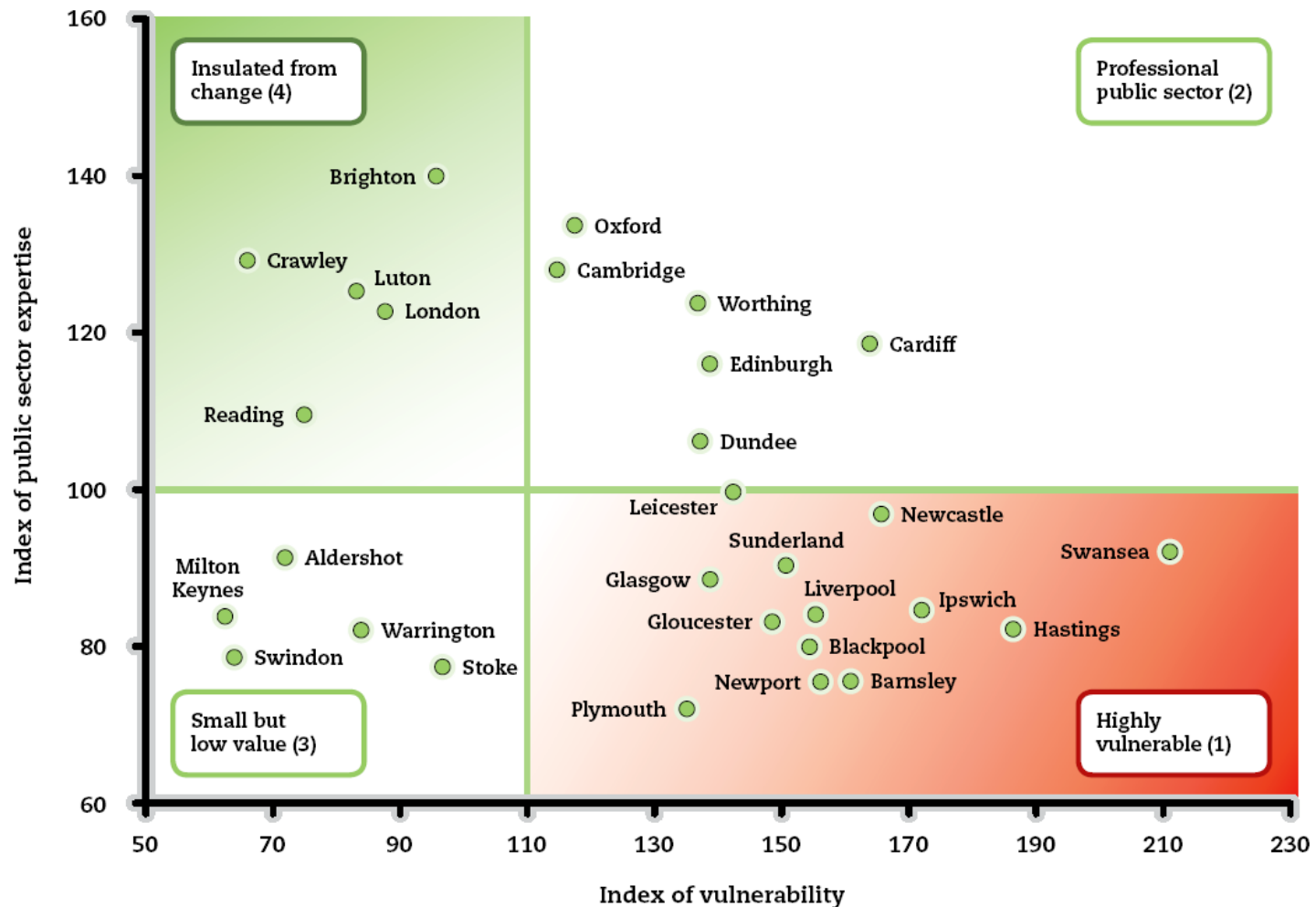
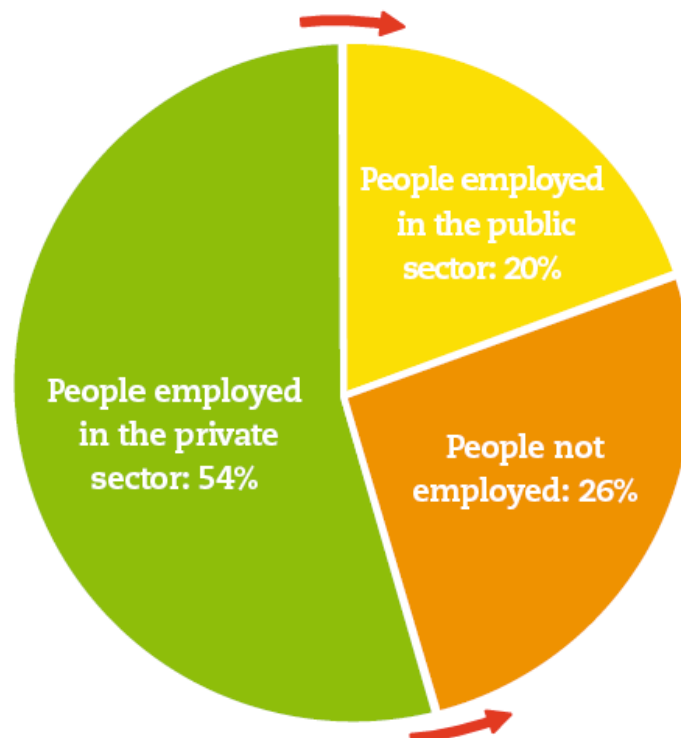


Figure 1: Share of public and private sector jobs (2008)



Source: NOMIS 2010, Annual Business Inquiry, workplace analysis (2008 data).

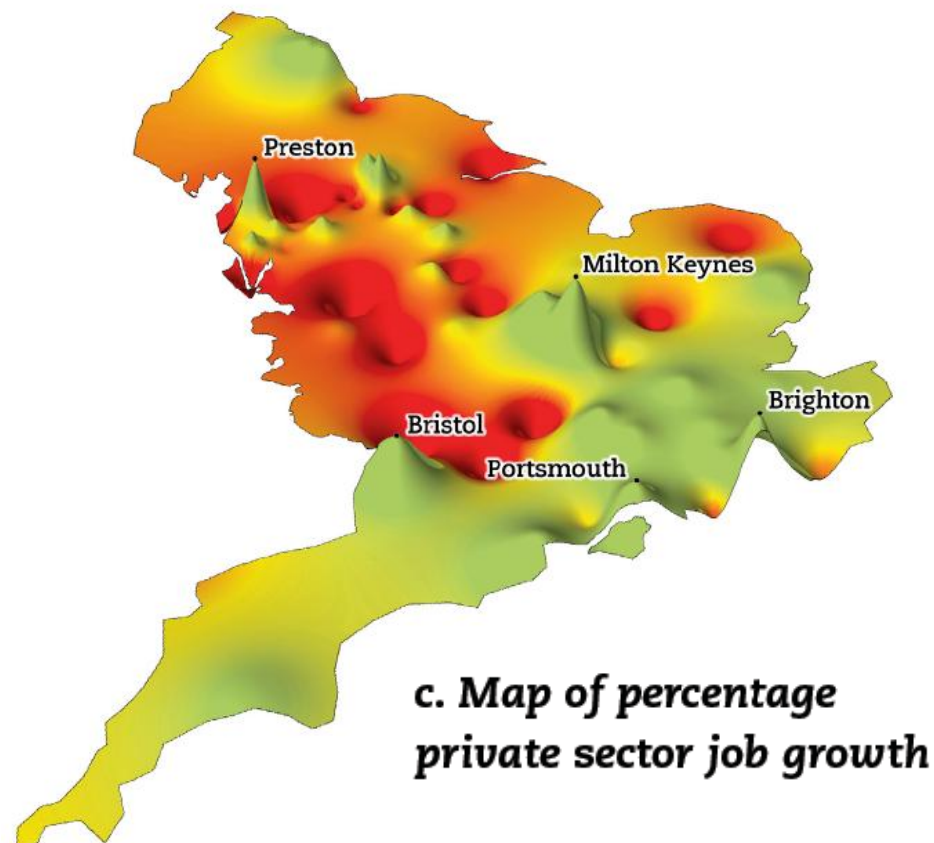
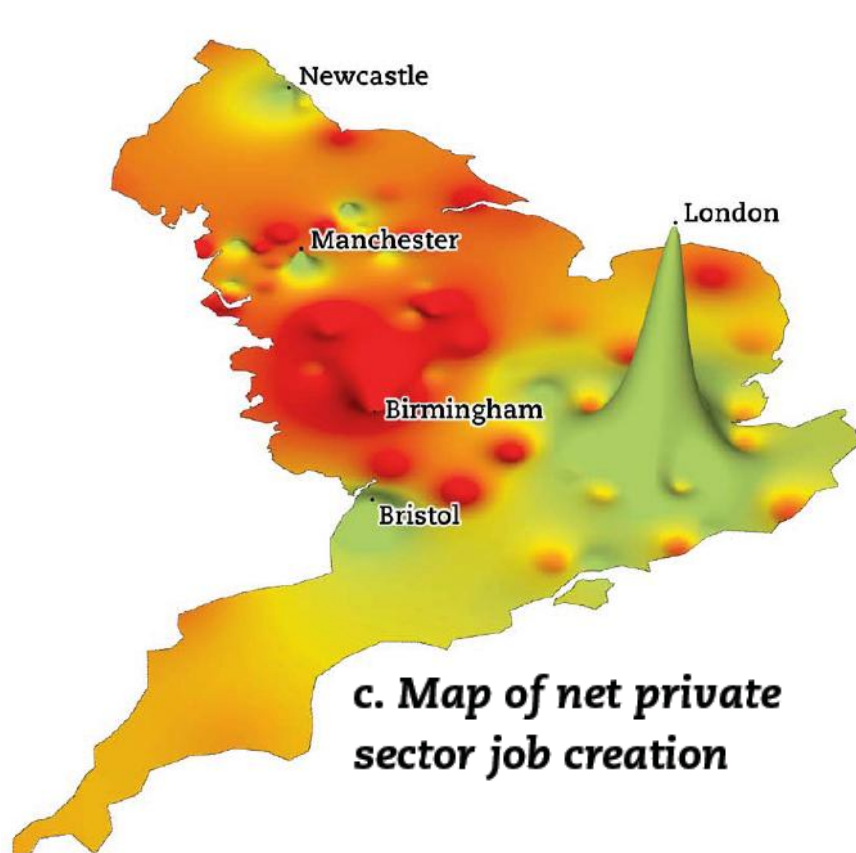


Private sector jobs

Region	Change (1998-2008)	Percentage Change (1998- 2008)	Share of total private sector jobs (1998)	Share of total private sector jobs (2008)	Share of England population (2008)
North & Midlands	75,300	1.0%	45.9%	44.5%	47.6%
London & South	772,200	8.9%	54.1%	55.5%	52.4%

Source: NOMIS 2010, Annual Business Inquiry, workplace analysis. Estimates based on jobs added between 1998-2005 and 2006-2008 to take into account changes in ABI methodology. NOMIS 2010, Mid-year population Estimates (2008 data).

10:1

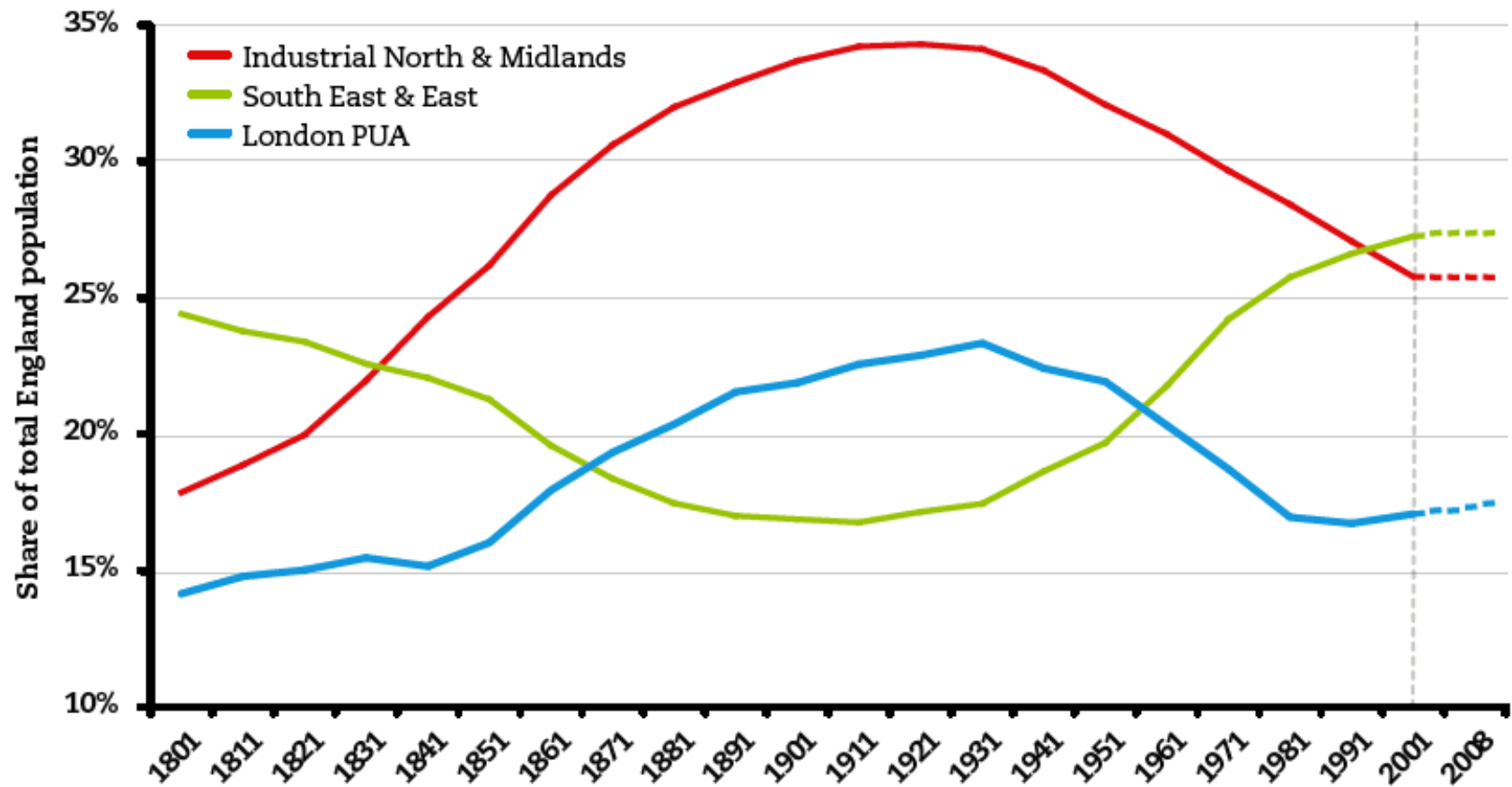


City	Employment rate (2008)	Jobs needed to bring city to English average employment rate of 74.2 percent (2008)
Hull	62.3%	19,800
Liverpool	62.8%	54,900
Birmingham	65.3%	124,100
Blackburn	65.7%	7,300
Cambridge ³⁰	66.9%	6,100
Middlesbrough	67.2%	20,200
Luton	67.8%	7,600
Burnley	67.8%	7,000
Coventry	68.1%	11,900
Barnsley	68.2%	8,300

Source: NOMIS 2010, Annual Population Survey (2008 data).



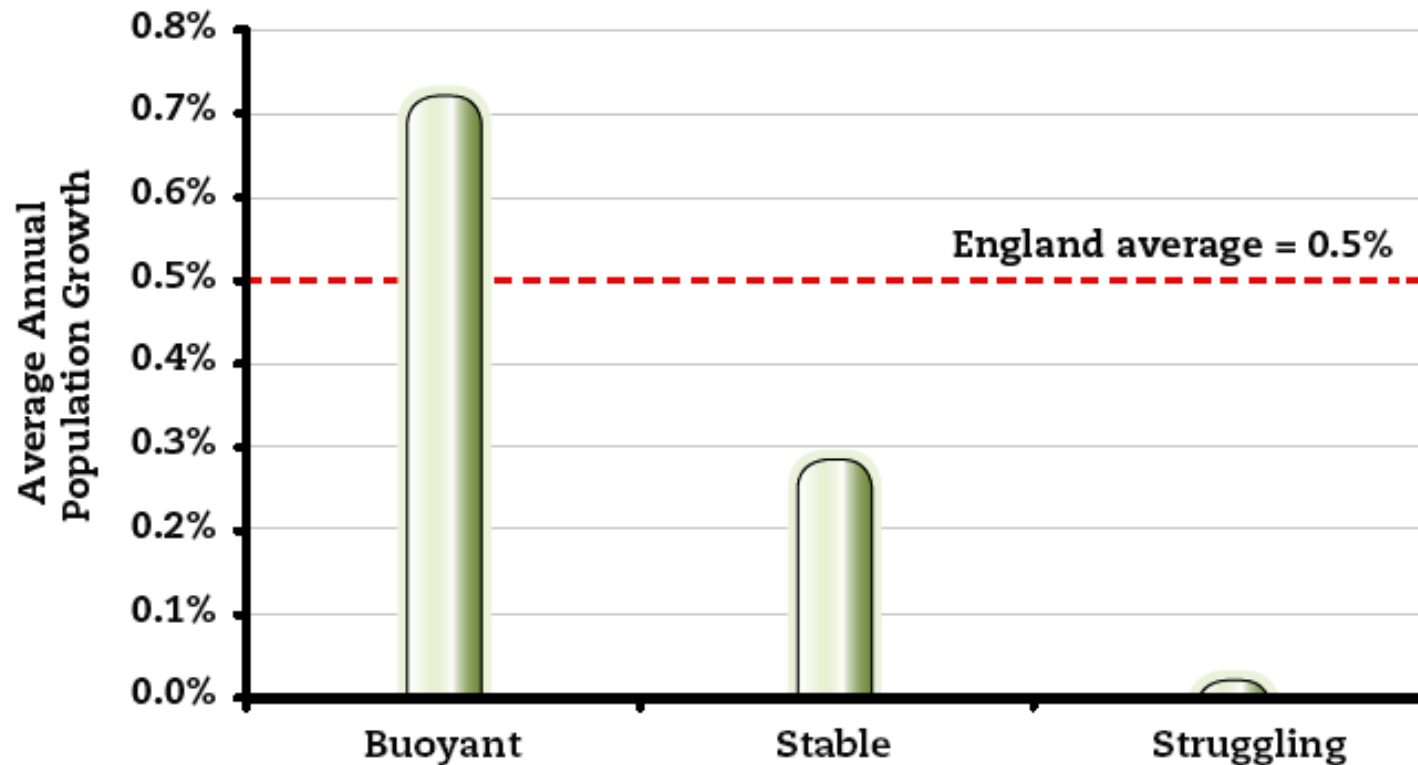
Cities change size



Source: Data courtesy of Dr Humphrey Southall and the Great Britain Historical GIS Project at the University of Portsmouth. Data for 2008 is an estimate from NOMIS 2010, Mid-year population estimates 2008 data³⁸



Growing (or not)



Source: NOMIS 2010, Mid-year Population Estimates (1998 and 2008 data)



Cities are different

