

THE MARCHES

LOCAL ENTERPRISE PARTNERSHIP



National Conference
Thursday 21st October Birmingham
COUNCILLOR KEITH BARROW

The Marches
Local Enterprise Partnership



Presentation

- Why a 'Marches' Partnership?
- What is the process?
- What is the proposal?
- What's in it for us?



The Marches
Local Enterprise Partnership



The Marches Local Enterprise Partnerships?

- Support businesses to create jobs and rebalance economy

(28% of jobs in the Marches provided by public sector)

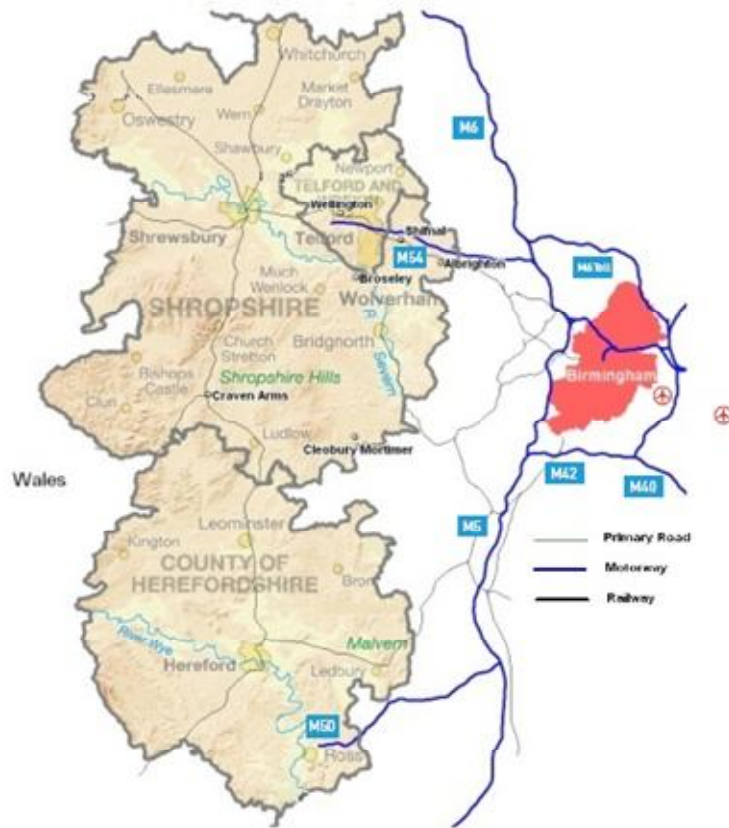
- Replace some of RDA(AWM) functions
- 'functional economic geographies'
- Private/Public partnership (50:50)



The Marches
Local Enterprise Partnership



The Marches Enterprise Partnership



634,000 people and
28,000 businesses
covering 2300 square miles

Key assets include the Ironbridge Gorge World Heritage Site, the Shropshire Hills and the Wye Valley Areas of Outstanding Natural Beauty, Offa's Dyke, the rivers Severn and Wye, and iconic places of interest including Ludlow and Ross-on-Wye.

The Marches
Local Enterprise Partnership



Why a Marches Enterprise Partnership?

Functional Economic Geography:

- 75% of (Shropshire) Chamber Businesses see as coherent business area
- Shared Characteristics - High quality environment, connectivity and location
- Shared Growth Sectors: Tourism; Manufacturing; Food and Drink
- Opportunity to exploit urban/rural strengths
- But - recognises strong external relationships

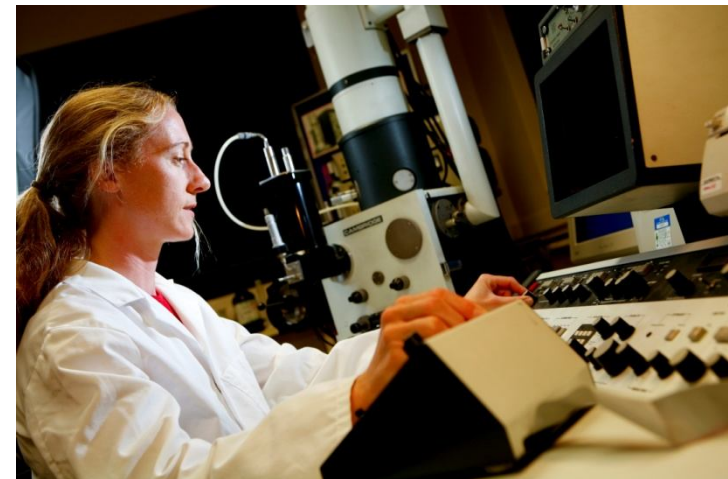
The Marches
Local Enterprise Partnership



Why a Marches Enterprise Partnership?

Historical working:

- Three unitary Councils
- Consenting adults - Sub regional working already
- Oven ready - ready to deliver
- Track record of delivery
 - On time
 - On budget



The Marches
Local Enterprise Partnership



What is the process?

- Outline proposals required by 6th September
- Marches LEP bid submitted August 12th
- Go ahead expected week beginning 11th October
- Regional Growth Fund bid by Christmas
- Creation of Business Plan September 2010 - March 2011 to be informed by Task & Finish Groups and Business Event
- Delivery from 1st April 2011

The Marches
Local Enterprise Partnership



What is our proposal ?

Vision

***Creating the conditions for a strong, diverse and enterprising business base
resulting in an increase in sustainable private sector jobs***

Functions:

- Strategic Leadership – Consultation, planning and Influencing
- Enterprise – Business Support, Start Up finance, Networking, Self Employment, Growth Sectors and diversification

The Marches
Local Enterprise Partnership



- Employment, Education & Skills – Improving employability, Skills investment, HE provision, Knowledge Transfer
- Planning & Housing – Business Friendly policies, Responsive, Continued focus on Affordable Housing
- Transport & Other Infrastructure, Road Rail, Power, Water, Broadband
- Sustainability – Low Carbon Economy, Sustainable Rural Economies

The Marches
Local Enterprise Partnership



What is our proposal ?

Funding:

- No dedicated funding = partnership approach
- Sources:
 - Regional Growth Fund
(£1bn over 2 years = £20m pa)
 - Advantage West Midlands/ Homes and Communities Agency assets
 - Private sector
 - Innovative tax raising

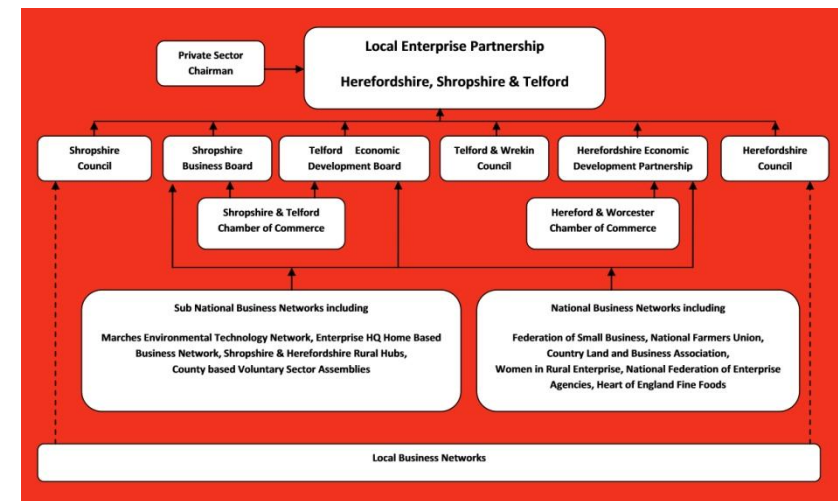
The Marches
Local Enterprise Partnership



What is our proposal ?

Governance :

- Small Executive Board - decisive; responsive; low overheads
- Driven by existing business boards
- Board:
3 Local Authority Leaders,
3 Business Board Chairs
and Private sector Chair



The Marches
Local Enterprise Partnership



What's in it for us ?

It is about helping businesses to create jobs:

- Local decision making
- Responsive to business needs - all support in one place
- Accountable
- Less bureaucratic
- Lower overheads - joint working



The Marches
Local Enterprise Partnership



Questions / Comments ?



The Marches
Local Enterprise Partnership

