



DEPARTMENT OF HEALTH

Rheynn Slaynt

Establishing Roots of Empathy

A Small Island Approach

Sue Porter.
Service manager
Health visiting and school nursing service



Isle of Man
Government
Reillys Eilan Vannin



The Isle of Where?

- Geographical Centre of the UK
- 32 miles long, 15 wide
- The oldest parliament in the world
- A Crown Dependency
- Population of circa 80,000
- Indigenous Manx population at 47.6%
- Oct 2010 – unemployment 1.7%
- 748 unemployed & 395 job vacancies
- 41,793 economically active
- 17,572 children between 0 – 18 yrs

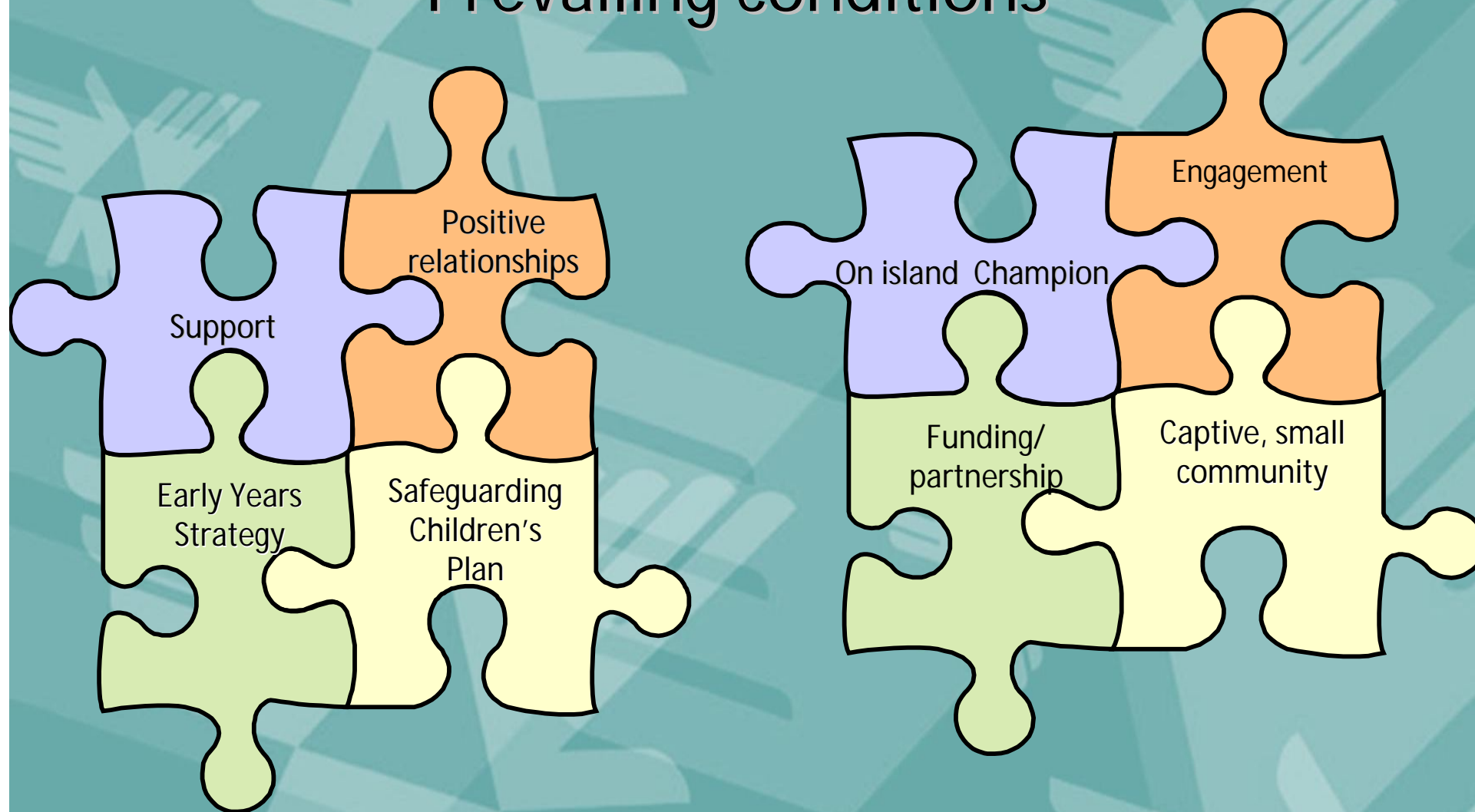




DEPARTMENT OF HEALTH

Rheynn Slaynt

Prevailing conditions





DEPARTMENT OF HEALTH

Rheynn Slaynt

Manx Landscape

123
Looked After
Children

46 children on
the Child Protection
Register

Small
community,
whole country
involvement



1 in 5 children
experience
psychological
difficulties.
**? 3400 potential
children on IOM.**

CAMHS referrals
escalating

Child care enquiry following
murder of two teenagers



DEPARTMENT OF HEALTH

Rheynn Slaynt

Current climate

Intensive support coaching during
the ante natal period



Extra support for vulnerable families



Improving
parenting
skills



DEPARTMENT OF HEALTH

Rheynn Slaynt



"Change is often accomplished by altering the lens through which we view the world."



DEPARTMENT OF HEALTH

Rheynn Slaynt



‘The more that we can give young people opportunities to meet with and observe at first hand how sensitive parents treat their young offspring the more likely they are to follow suit.’
(John Bowlby)



DEPARTMENT OF HEALTH

Rheynn Slaynt

Roots of Empathy?

- A classroom based programme utilising babies as the 'teachers'.
- Founded in 1996 by Mary Gordon in Toronto, Canada
- Reducing levels of aggression in children whilst raising social / emotional competence
- On Island targeting Year 2 children
- Trained 'instructors' facilitating
- 27 sessions throughout the school year
- 9 themes
- Baby Celebration
- Evidenced based – University of British Columbia





DEPARTMENT OF HEALTH

Rheynn Slaynt

Manx Outcomes

International research suggests that Roots of Empathy reduces the intergenerational cycles of violence, aggression and poor parenting.

Children on the Isle of Man who received the roots of empathy programme in contrast to those who did not, showed significant improvements in the following:-

- ✓ Increased pro-social behaviour
- ✓ Decreased aggressive behaviours
- ✓ Increased empathy
- ✓ Increased peer acceptance
- ✓ Increased social skills



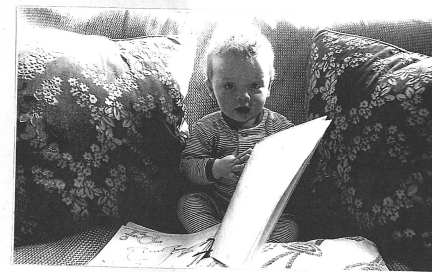


DEPARTMENT OF HEALTH

Rheynn Slaynt

From Braddan school

June 2009



When you are 7 yrs old, we all wish
that you will have kinds friends, be
polite, have good manners, be playful and
obedient. We also hope that you will be
friendly and nice and that there will be
no bullies at your School. We hope that
you will be a good listener, have a good
time at School and have a bike that
you can learn to ride! Thankyou for coming
to our class this year! XOXO



The world 's
youngest
teachers!!!!



DEPARTMENT OF HEALTH

Rheynn Slaynt



*“Children light the
footpath to the future.”*

sueporter@gov.im