

Promoting a Healthy & Safe Games

London Health Conference 2010

Hilary Ross
2012 Programme Director
NHS London

Overview

Bid commitments and IOC requirements

Public health impacts and opportunities

- Health promotion & prevention
- Emergency preparedness
- Leveraging the Games for health improvement

NHS preparations at London and local level



Bid commitments and IOC requirements

24 hour ambulance cover

Designated hospitals

Free healthcare for Olympic Family

NHS volunteers

Public Health

Well tested emergency response capability

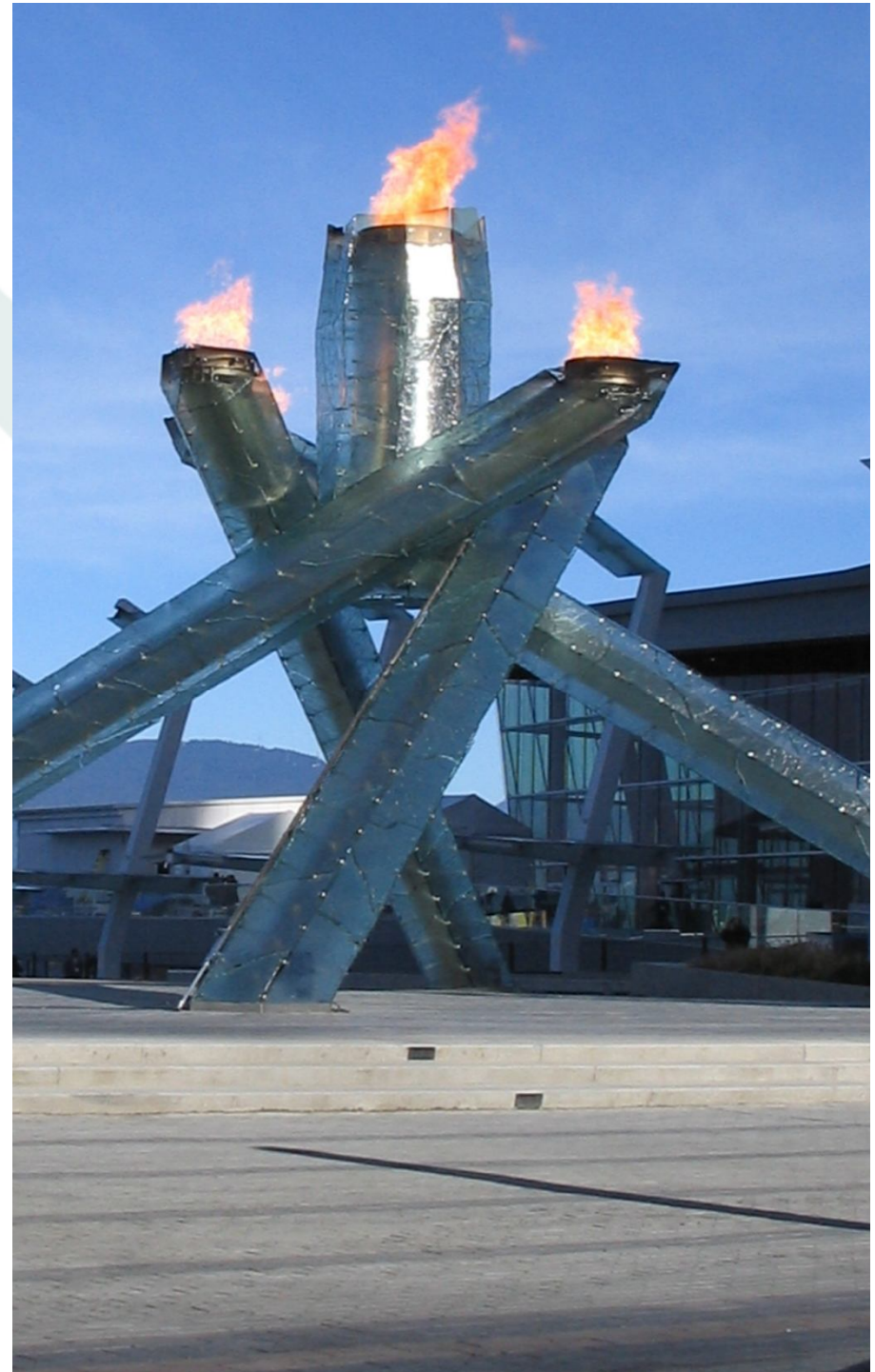
No detriment to local population

Health Legacy

Sports and exercise medicine



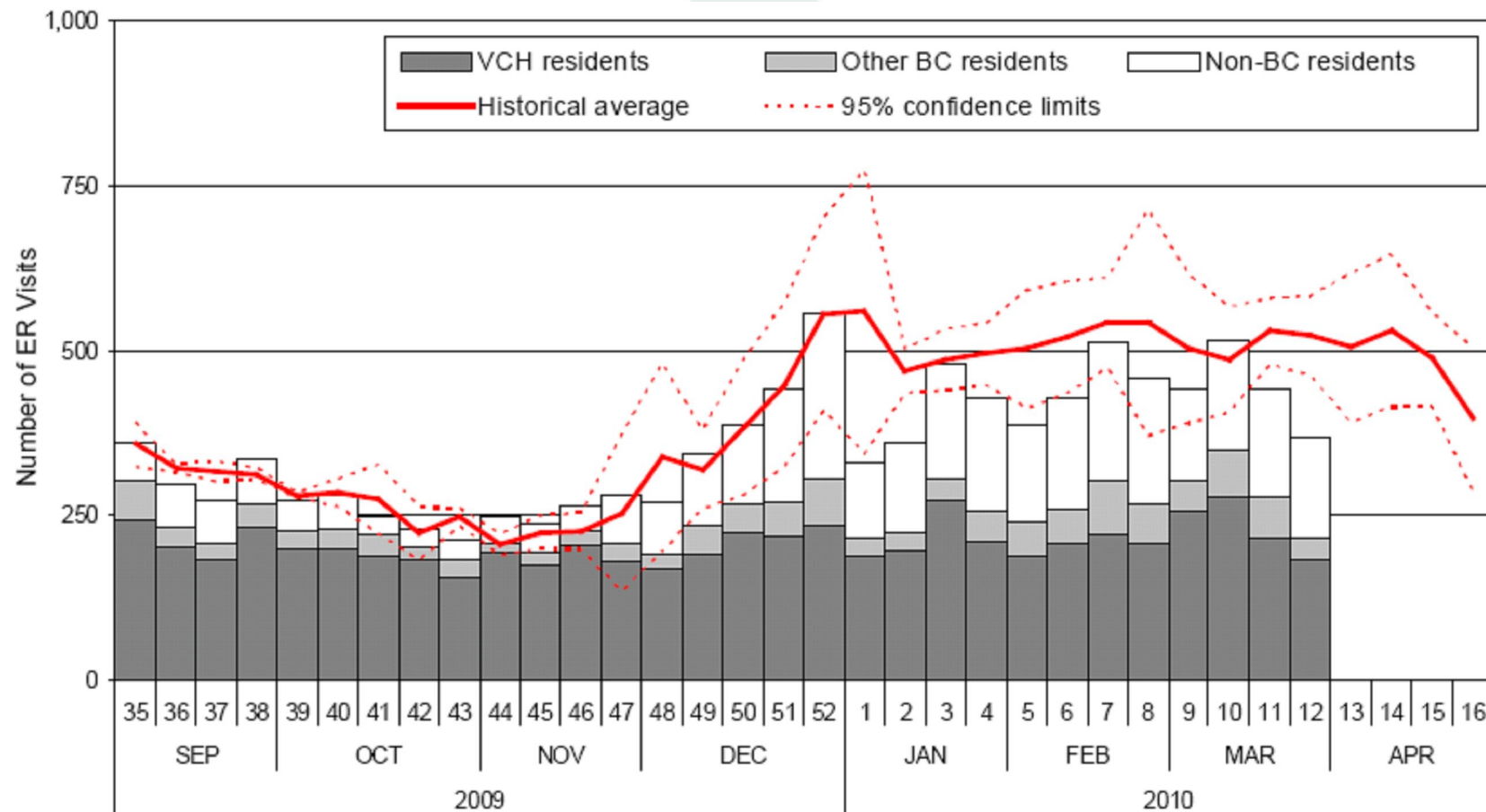
The challenges to public health from an Olympic / Paralympic Games



Increased prevalence of illness and injury

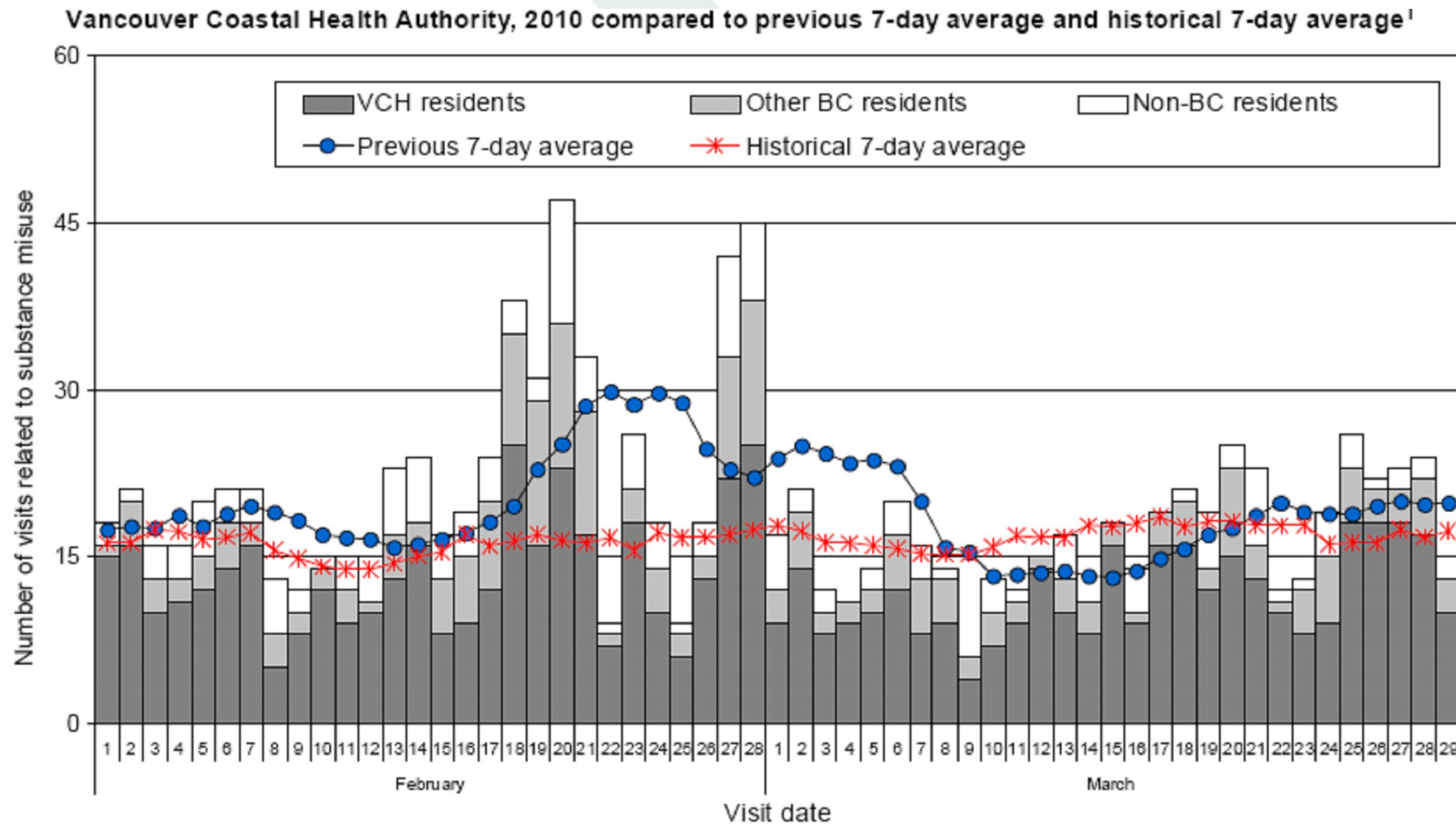


Vancouver community service impact



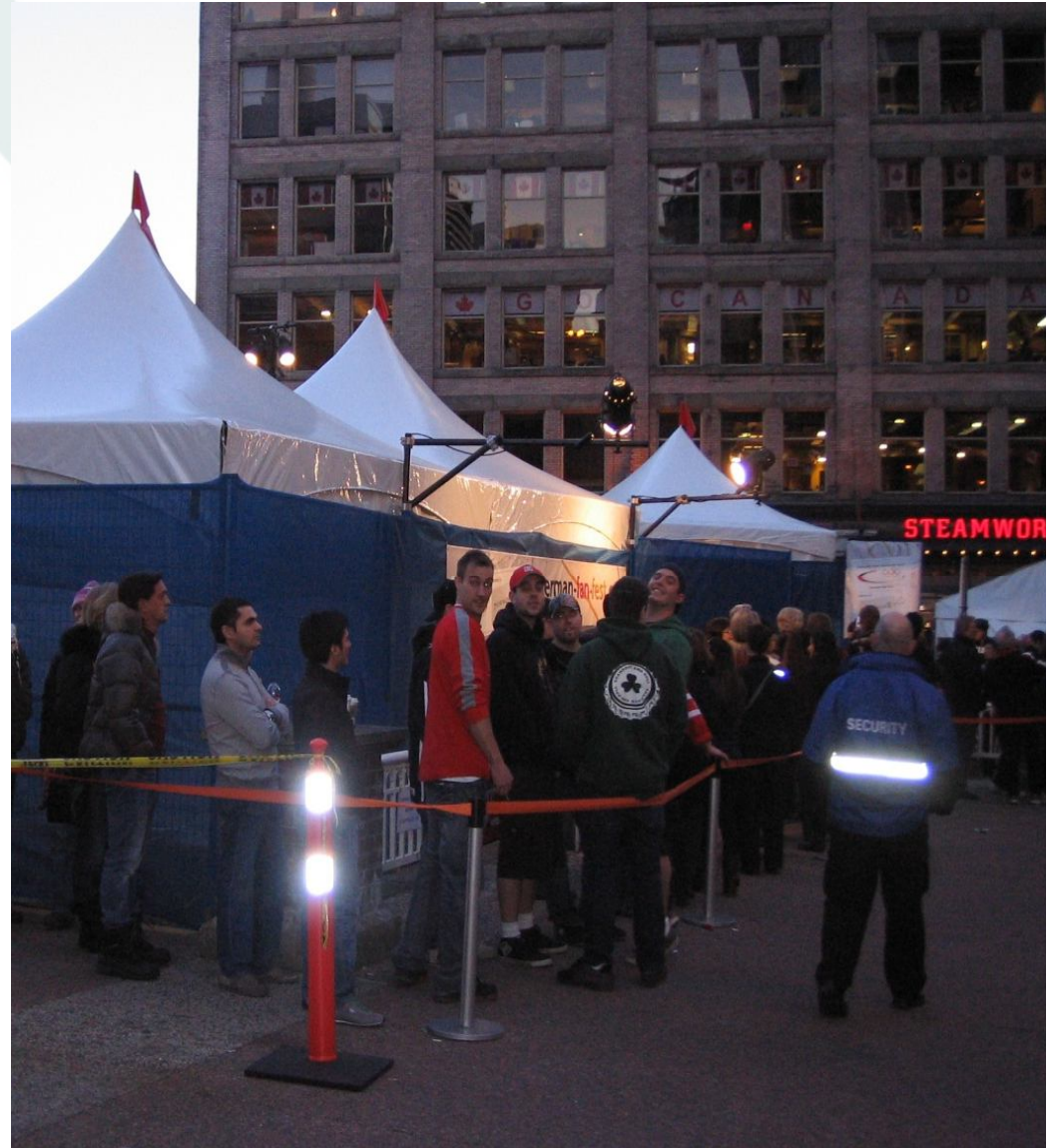
**Visits to Whistler Health Care Centre were below
historical levels during the Games**

Vancouver hospital attendances



Increased attendance at local hospitals for substance misuse

Cultural events and live sites



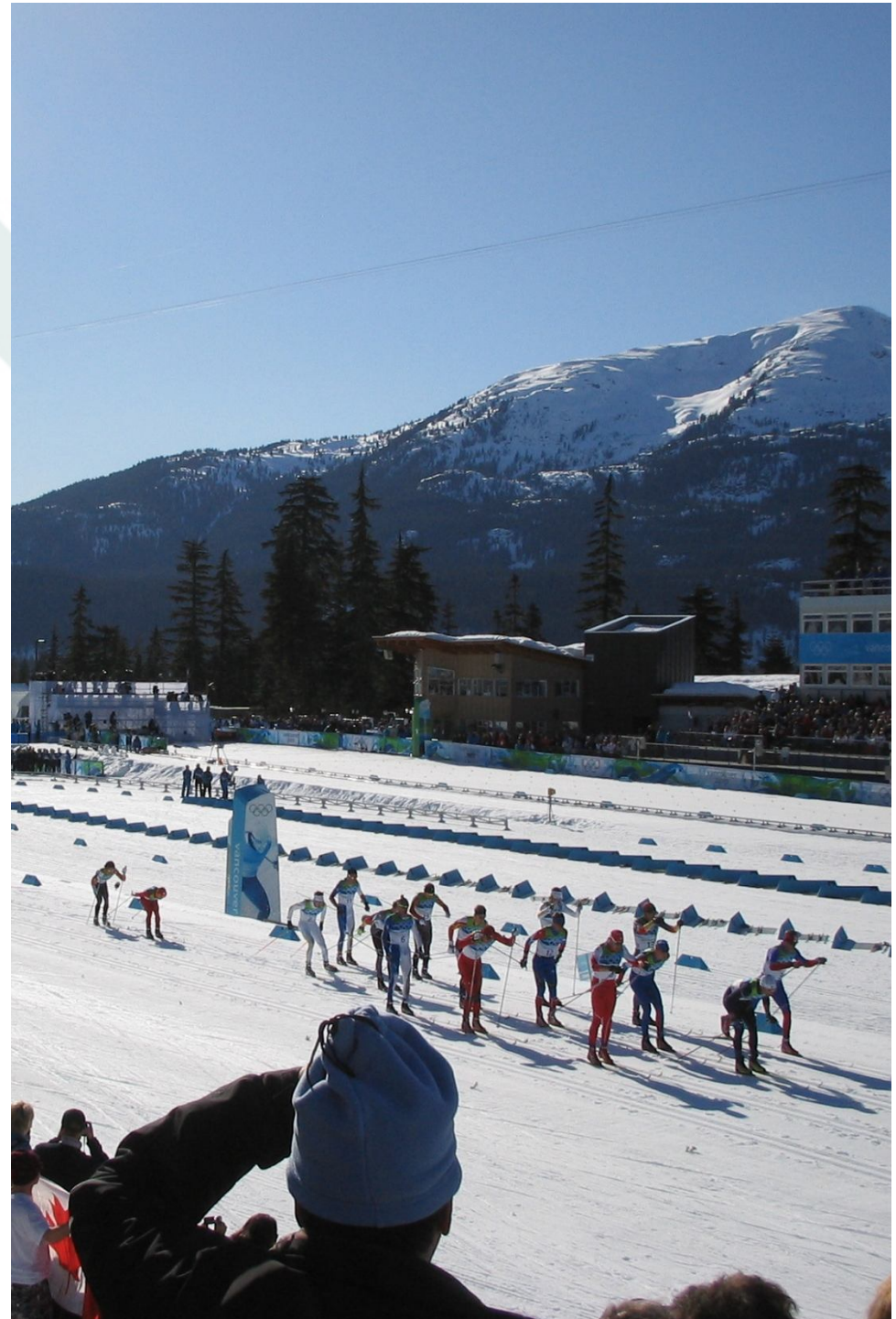
Corporate sponsorship



**Increased threat
level and other
pressures on NHS
resilience**



Actions for the NHS and partners



Mitigation through health promotion and prevention

Volunteer training

Good quality facilities in venues and availability of drinking water

First aid provision

Responsible sponsorship & management of alcohol

Sexual health promotion

Ramping up food inspections



Increasing preparedness in response to Home Office planning assumptions

Heatwave

Mass Casualties

Release of Chemical, Biological, Radioactive, Nuclear (CBRN) and Hazardous Materials

Industrial action

Disruption to water/ power/ telecoms

Increased surveillance & reporting of infectious diseases



Leveraging the Games to support health improvement goals

Go London! - Go 10,000 challenge for NHS staff in 2011

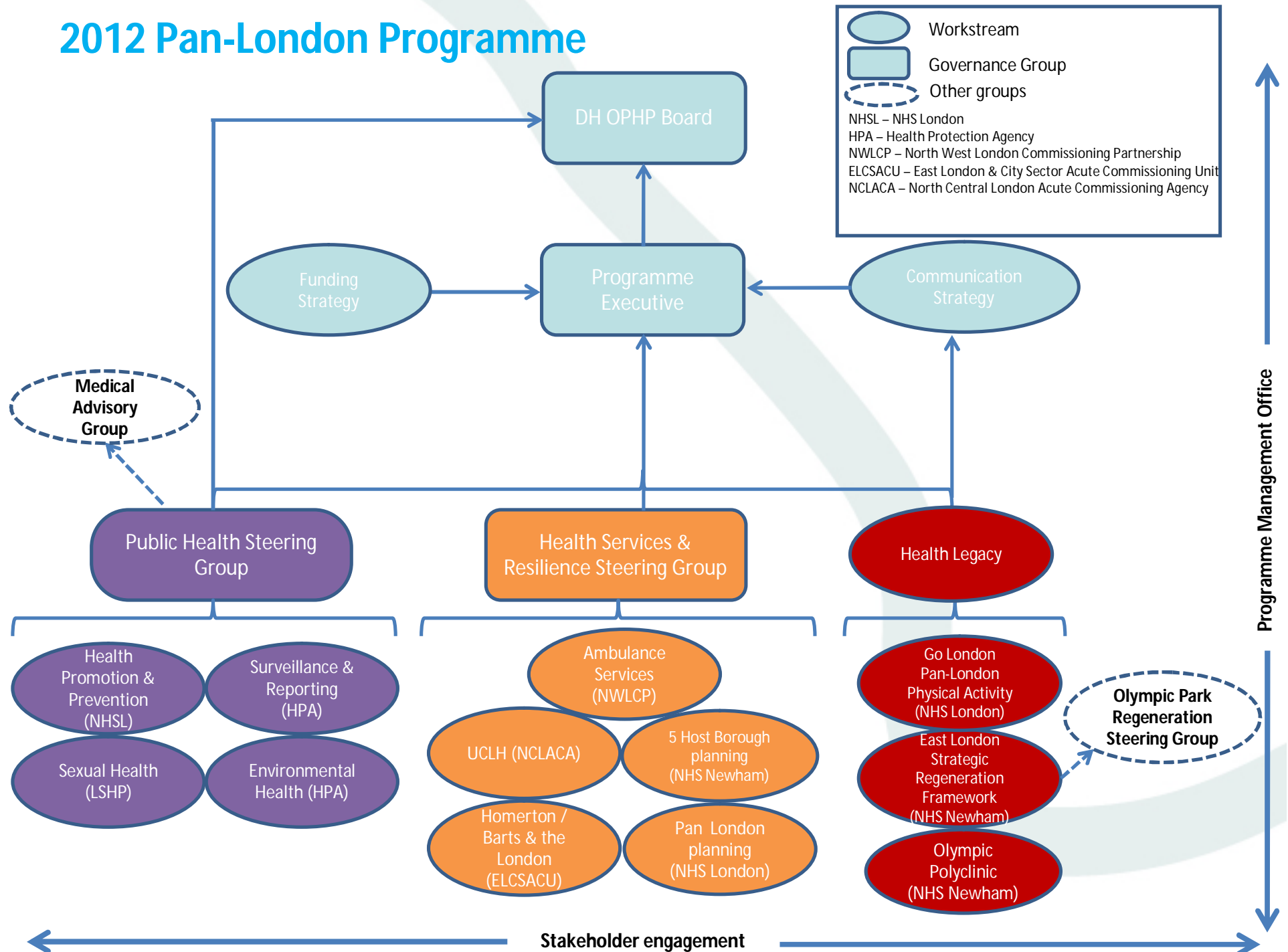
Healthy eating

Tobacco

Sexual health



2012 Pan-London Programme



What NHS organisations need to do locally on public health

Support their 2012 lead

Engage with local partners

Consider the challenges for the Games period as well as the opportunities for legacy

Provide assurance!



hilary.ross@london.nhs.uk