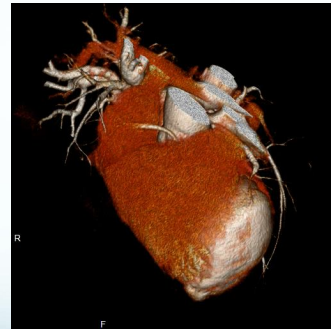


## Primary Care Chest Pain Clinic

Dr Kosta Manis



### Bexley – a diverse borough

- 16% of Bexley's population is over the age of 65
- Bexley's most deprived wards are in the north of the borough
- Residents here face a discrepancy in healthcare outcomes and life expectancies (six years less) compared to those in Bexley's more affluent areas
- The north of the borough is highly polluted, highly industrialised and highly diverse



### Drivers

- Need to improve quality and access for patients with suggested CHD, whilst controlling spend
- Lack of control over costs when patient referred to a hospital Rapid Access Chest Pain Clinic
- Need to prevent unnecessary invasive surgery
- Need to cut waiting times
- Need to produce more accurate diagnosis
- Need for safer and convenient care

### Previous pathway

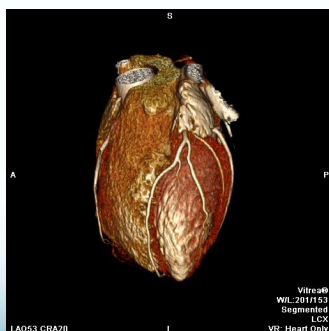
- Patient referred to undertake exercise ECG
- Angiograms – risky procedure which requires intervention and puts patient lives at risk
- Inaccurate – only 70% of the data recorded from an ECG can be used clinically
- High cost
- Average wait – 3 to 20 weeks

### New pathway

- CT scanning results received within 3 working days
- Patient follow-up, within 7 days of the scan being performed
- If further procedure required, patient referred immediately
- This pathway is endorsed by NICE and the British Heart Foundation
- Zero risk to patient
- 99% accuracy
- Low cost
- Average wait – maximum 22 days

### New pathway – high quality, safe and cost-effective

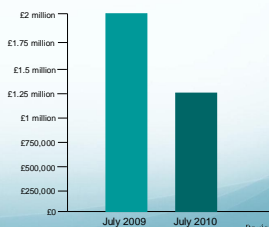




Bexley NHS

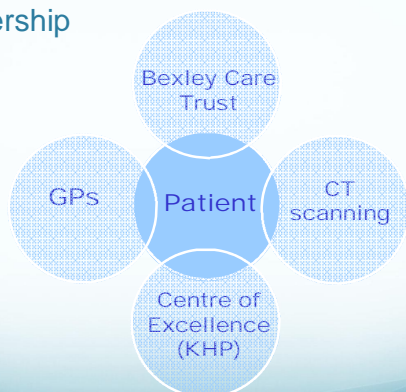
## The results so far

- Forecasted annual savings – up to £300,000
- Cost savings (April – July 2010):
  - Costs = £1.25 million spend (July 2010) compared to £2m last year (July 2009)
  - Activity = 6952 patients seen (July 2010) compared to 9,394 last year (July 2009)
- 132 patients referred to Primary Care chest pain clinic (April – July 2010):
  - 55 – discharged
  - 77 – CT scan
  - 2 – referred for further investigation



Bexley NHS

## Partnership



High quality – low cost

Bexley NHS

## Testimonials

On completing a patient satisfaction survey 100% of patients were 'very happy' with the new cardiology services

"I could not wish for better care"

"Very happy with the service and for a very lovely doctor who has time to listen to me"

"Having had several angiograms before, this procedure was by far a more pleasant experience"

"The scan service & their staff were very helpful and made me feel at ease, would highly recommend this service, thank you very much!"

Bexley NHS