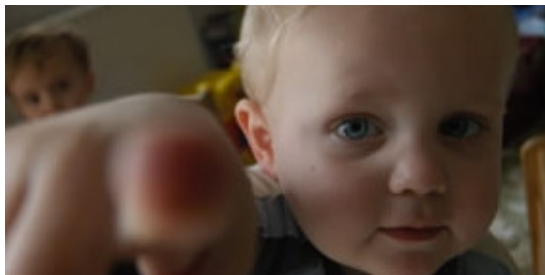


Inspection and regulation from September 2012

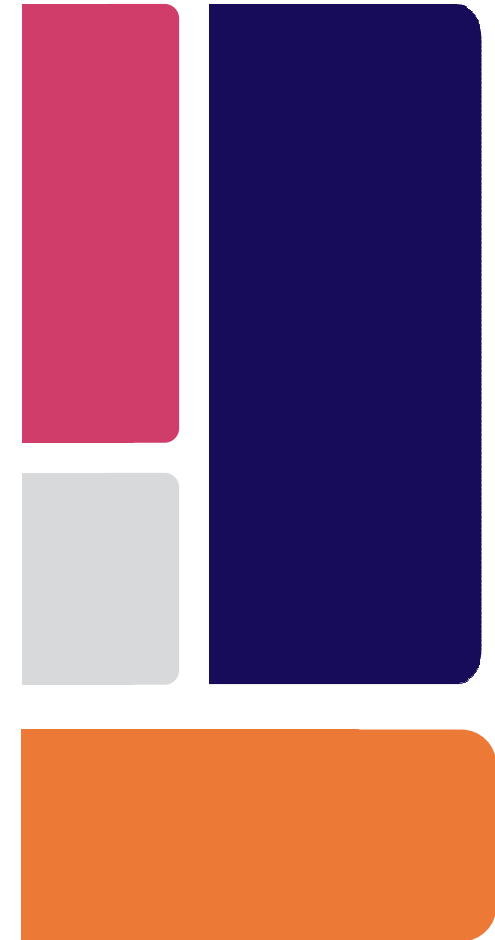
Dee Gasson
Principal Officer, Early Years



Registration

From September 2012 we are:

- continuing to focus on registration to minimise risks to children and to make sure providers are ready to care for children
- allowing more autonomy to providers to manage their own service through:
 - removing conditions of registration
 - providers checking their managers
 - ceasing suitable person interviews when managers or nominated persons change
 - referring minor concerns to providers to deal with

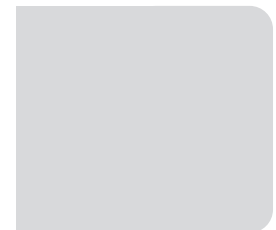
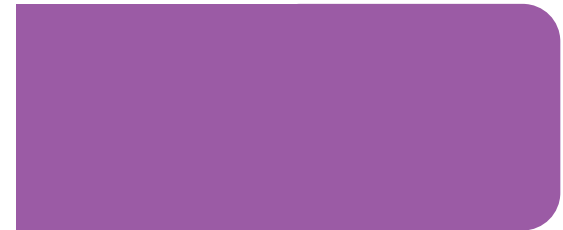


Inspections



Inspections will:

- in some cases be triggered by concerns
- include a check on any minor matters referred to a provider
- include a meeting with the manager and/or the registered provider
- have less focus on paperwork and more on interactions with children
- have more focus on observations including joint observations with the manager
- include more dialogue about emerging findings
- have a formal feedback session at end



Inspection focus

Inspectors will consider:

- the impact of practitioners on children's learning and development and how all children are helped to achieve their full potential
- the effectiveness of care practices in helping children feel emotionally secure and ensuring children are physically, mentally and emotionally healthy
- the effectiveness of leadership and management in monitoring the quality of provision and meeting the safeguarding and welfare requirements



Inspection judgements



A four-grade system

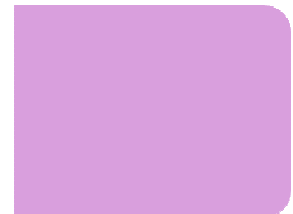
- Overall effectiveness: the quality and standards of the early years provision taking into account:
 - how well the early years provision meets the needs of the range of children who attend
 - the contribution of the early years provision to the well being of children
 - the effectiveness of the leadership and management of the early years provision



Preparing for inspection

Most providers need do little to prepare but the following points may be helpful:

- be familiar with the revised Early Years Foundation Stage and the main inspection documents
- check the inspection criteria and think about what evidence you have to show the inspector (and how to find it when the inspector arrives)
- make sure you can demonstrate the progress that all children are making and how you contribute to that
- think about how best to plan the day so the inspector sees everything you want them to see
- think about who will do any joint observations with the inspector and who you want to attend feedback



Early feedback

- Evaluation of new framework currently being carried out – will be completed in the spring
- First data published on inspection judgements – March 2013
- Early indications are positive
 - providers welcome the focus on learning and development
 - new report template – well received by parents and others
 - anecdotal evidence suggests we have successfully 'raised the bar'
- Announcement in the spring about further measures to bring about improvement in the sector



Main documents

The main documents for regulation and inspection are all available on Ofsted website:
www.ofsted.gov.uk

- Are you ready for your inspection?
- Evaluation schedule for inspections of registered early years provision
- Conducting early years inspections
- Framework for the regulation of provision on the Early Years Register
- Guide to registration on the Early Years Register

