

A close-up photograph of a young woman with long, wavy brown hair, smiling and looking slightly upwards and to the right. The image is the background for the entire slide.

Using the *TOEFL iBT*® Test to Measure English Language Proficiency

Going Global 2013

Sandy Bhargal, ETS

Michael Knab, ETS

TOEFL iBT® • TOEFL® ITP • TOEFL® Junior™

Contents

- About TOEFL Test
- TOEFL Scores
- Score Reports
- Scoring Process
- Sample Speaking Task
- Resources

Go anywhere from here



***TOEFL iBT[®]* scores**

The *TOEFL*® Test Advantage

More accepted: 90% of students who have taken the *TOEFL*® test get into their 1st or 2nd choice university

Most choices: 8,500+ institutions in 130 countries, including:

- All of the Russell Group universities in the U.K.
- Nearly every college and university in the U.S., U.K., Australia and Canada

Most respected: Admissions officers surveyed say that it provides **more accurate scores** to differentiate between applicants

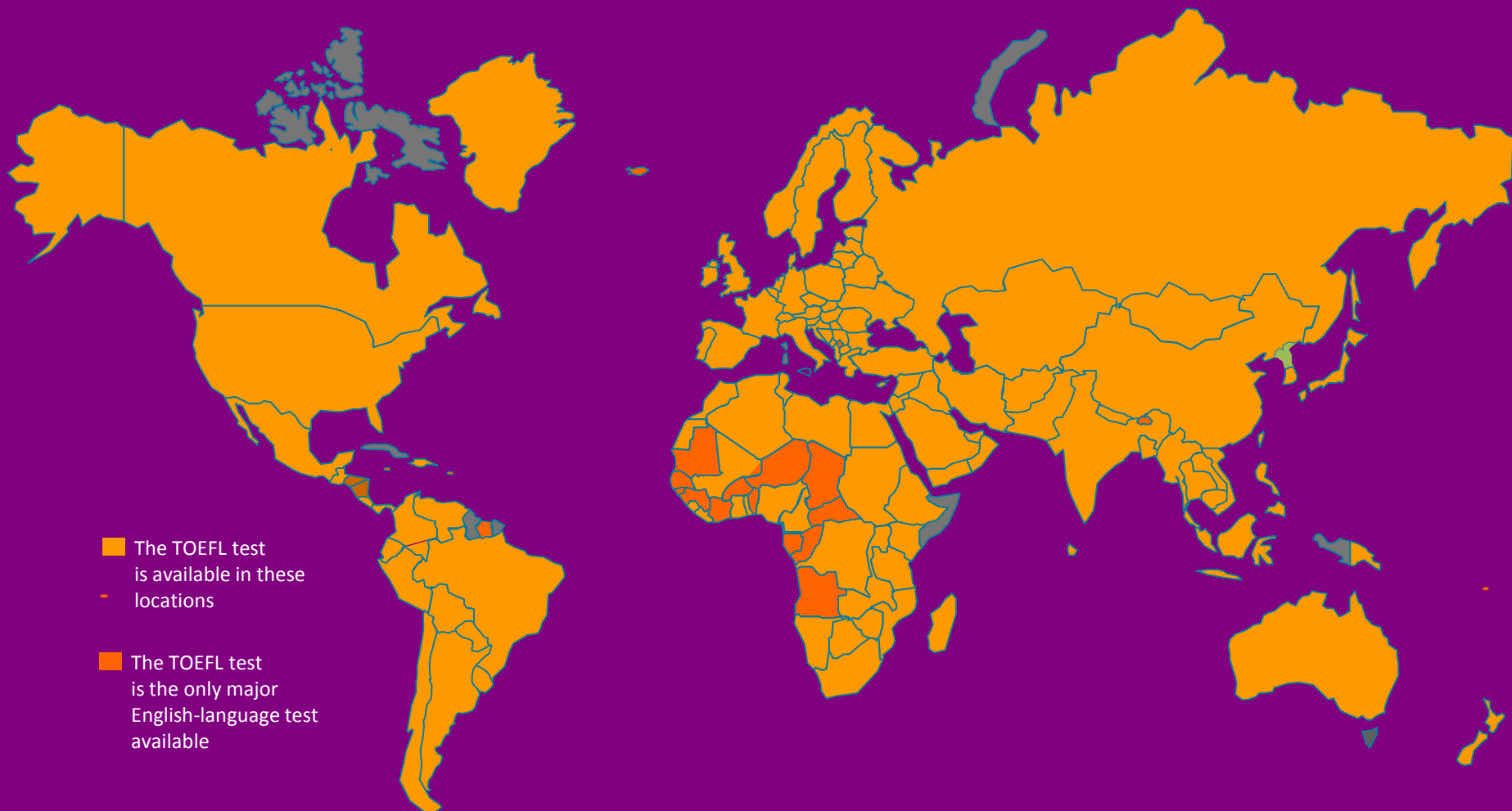
Most taken: More than **27 million** people have taken the test

* Source: National Universities Ranking, *U.S. News & World Report Best Colleges 2011*

** Source: Survey of 263 admissions officers at U.S. universities, of which 212 accept both the TOEFL test and the IELTS® test and 152 state a preference.

Go anywhere from here

Ensuring that any student anywhere in the world gains access to the *TOEFL*[®] test



From Andorra to Iceland and almost every place in between, only the *TOEFL*[®] test brings students from 180 countries to your campus. With the TOEFL test being administered in nearly every country, you will get the most diverse pool of students from all over the world. Locations in the darker color are countries where the only major English-language test available is the TOEFL test.

UKBA – Immigration Requirements

TOEFL iBT Score Requirements

LEVELS	B1	B2
Reading	4	18
Listening	9	17
Speaking	16	20
Writing	13	17
Totals	42	72

Go anywhere from here

TOEFL[®] Score Requirements (sample)

Teesside University

- **Postgraduate (Taught)**

- Postgraduate Diploma in Law – **110**
- Health – **90-100**
- MBA, education, English, LLM Master of Laws, LLM (Criminal Law), LLM (International Law), LLM (Medical Law) and LLM (Business Law), media studies, journalism, mass communications, history, psychology, criminology, sociology, youth studies, criminal investigation – **90**
- Art & design, business (except MBA), computing, sport, engineering, science, TV production – **80**

Go anywhere from here

The *TOEFL iBT*® Test Format

Section	Description	Testing Time	Score Scale
Reading	3–4 passages from academic texts; 12–14 questions per passage	60–80 min.	0–30
Listening	4–6 lectures, some with classroom discussion, 6 questions each; 2–3 conversations, 5 questions each	60–90 min.	0–30
Break	-	10 min.	-
Speaking	2 tasks to express an opinion; 4 tasks to speak based on reading and listening passages	20 min.	0–30
Writing	1 integrated task (write based on what is read and listened to); 1 independent task (support an opinion on a topic)	50 min.	0–30
Total	-	-	0–120

TOEFL iBT® test scores:

- are sent from ETS about 10 days after the test date
- are valid for 2 years

Go anywhere from here

Sample TOEFL iBT[®] Examinee Score Report



TOEFL[®] (Test of English as a Foreign Language[™])
Internet-based Test (TOEFL iBT[™])
Examinee Score Report

ETS[®] Security Guard
See back for details

Name: Chen, Ria

Last (Family/Surname) Name, First (Given) Name Middle Name

Email: rchen@gmail.com

Gender: F

Registration Number: 1234 5678 1234 5678

Date of Birth: 05 Mar 1987

Test Date: 01 Jan 2010



Chen, Ria
1A 23-4 Magnolia
Zhongzheng Dist.
Taipei City, 100
Taiwan

TOEFL Scaled Scores

Reading	18
Listening	18
Speaking	15
Writing	22
Total Score	73

Native Country: Taiwan

Native Language: CHINESE

Sponsor Code: 1234

Test Center Code: TAI1234

Test Center Country: Taiwan

Inst. Code

Dept. Code

1234
5678
9876
5432

12
34
56
78

19

Reading Skills	Level	Your Performance
Reading	Intermediate (15-21)	<p>Test takers who receive a score at the INTERMEDIATE level, as you did, typically understand academic texts in English that require a wide range of reading abilities, although their understanding of certain parts of the text is limited.</p> <p>Test takers who receive a score of INTERMEDIATE level typically</p> <ul style="list-style-type: none"> • have a good command of common academic vocabulary but still have some difficulty with high-level vocabulary; • have a very good understanding of grammatical structure; • can understand and connect information, make appropriate inferences, and synthesize information in a range of texts but have more difficulty when the vocabulary is high level and the text is conceptually dense; • can recognize the expository organization of a text and the role that specific information serves within a larger text but have some difficulty when these are not explicit or easy to infer from the text; and • can abstract major ideas from a text but have more difficulty doing so when the text is conceptually dense.

from here

Sample Performance Feedback on Examinee Report

Speaking Skills	Level	Your Performance
Speaking about Familiar Topics	Fair (2.5–3.0)	Your responses indicate you are able to speak in English about your personal experiences and opinions in a mostly clear and coherent manner. Your speech is mostly clear with only occasional errors. Grammar and vocabulary are somewhat limited and include some errors. At times, the limitations prevent you from elaborating fully on your ideas, but they do not seriously interfere with overall communication.
Speaking about Campus Situations	Good (3.5–4.0)	Your responses indicate an ability to speak effectively in English about reading material and conversations typically encountered by university students. Overall, your responses are clear and coherent, with only occasional errors of pronunciation, grammar, or vocabulary.
Speaking about Academic Course Content	Good (3.5–4.0)	Your responses demonstrate an ability to communicate effectively in English about academic topics typical of first-year university studies. Your speech is mostly clear and fluent. You are able to use appropriate vocabulary and grammar to explain concepts and ideas from reading or lecture material. You are able to talk about key information and relevant details with only minor inaccuracies.
Writing Skills	Level	Your Performance
Writing based on Reading and Listening	Fair (2.5–3.5)	You responded to the task, relating the lecture to the reading, but your response indicates weaknesses such as <ul style="list-style-type: none"> • an important idea or ideas may be missing, unclear, or inaccurate; • there may be unclarity in how the lecture and the reading passage are related; and/or • grammatical mistakes or vague/incorrect uses of words may make the writing difficult to understand.
Writing based on Knowledge and Experience	Good (4.0–5.0)	You responded with a well-organized and developed essay. Weaknesses, if you have any, might have to do with <ul style="list-style-type: none"> • use of English that is occasionally ungrammatical, unclear, or unidiomatic and/or • elaboration of ideas or connection of ideas that could have been stronger.

Go anywhere from here

Scoring Sets the *TOEFL*® Test Apart

Scoring process ensures fairness and integrity

- Rigorous rater training
- Daily calibration for Speaking and Writing raters
- Multiple raters for Speaking and Writing
 - 3 to 6 raters for Speaking responses
 - 4 ratings for Writing responses
- Scoring is separate from the testing site to maintain score integrity
 - Raters see and hear worldwide responses, not just from one country
 - Anonymous raters do not know the examinee

Go anywhere from here

The *TOEFL iBT*® Speaking Scores

Holistic scores

Test takers are rated on:

- Topic development (especially for integrated tasks)
- Delivery
- Language use

Ratings are 0–4 from rubrics

- Converted to a scaled score of 0–30

Go anywhere from here

TOEFL iBT[®] Speaking Tasks

6 speaking tasks

- 2 independent tasks about familiar topics
 - Responses based on personal experience
- 4 integrated tasks
 - 2 Reading/Listening/Speaking tasks (one academic, one campus-based)
 - 2 Listening/Speaking tasks (one academic, one campus-based)
 - Responses based on what was read and heard
- Time: 20 minutes
- Responses scored by 3 to 6 anonymous, objective raters via ETS's Online Scoring Network (OSN) for maximum objectivity and reliability

Go anywhere from here

Integrated Speaking Task

Task #5 – Problem/Solution

A Listening/Speaking campus-situation topic

- The test taker hears a conversation between two people about a campus topic – less than 90 seconds
- The test taker is asked to briefly summarise the problem and to express a personal opinion about the topic
 - Note-taking allowed
 - Preparation time: **20 seconds**
 - Response time: **60 seconds**

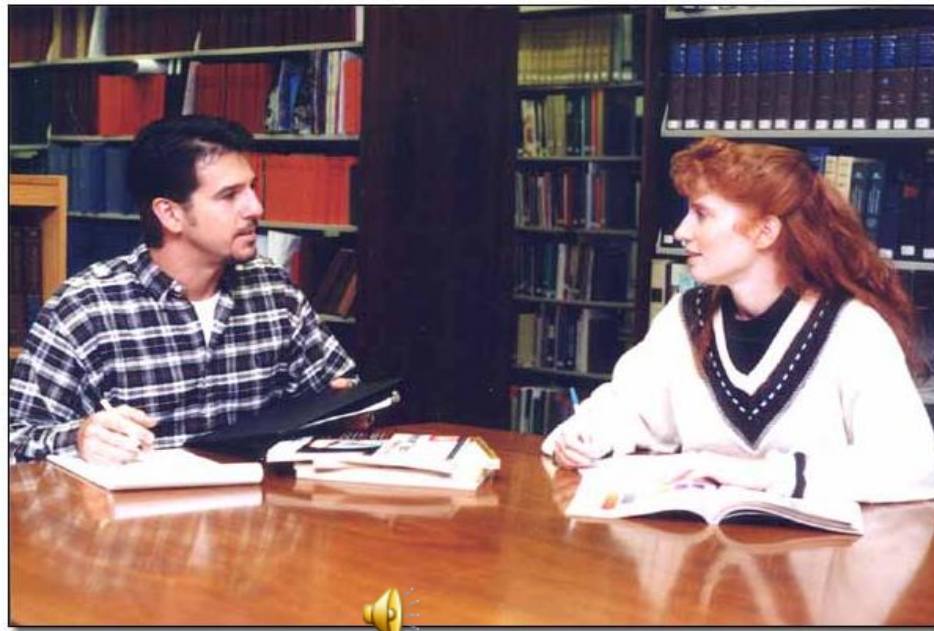
Go anywhere from here

Integrated Speaking Task

TOEFL Speaking



Question 6 of 6



Go anywhere from here

Integrated Speaking Task

TOEFL Speaking



Question 6 of 6

The students discuss two possible solutions to the woman's problem. Describe the problem. Then state which of the two solutions you prefer and explain why.

Preparation Time: 20 Seconds
Response Time: 60 Seconds



PREPARATION TIME

00 : 00 : 07

here

Sample Speaking Responses

- Listen for the following key points
 - Student #1 – stressed out because she has too much homework: a paper to write, two exams to study for and math problems to complete
 - Student #2 – recommends two possible solutions
 - Ask her professors for an extension on paper and math work
 - Create a schedule to manage her time and focus her energies
 - The test taker states which solution he/she prefers and explains why



Go anywhere from here



TOEFL iBT® Resources

TOEFL® Search Service

TOEFL® Search Service helps you recruit international students with the English skills they need to succeed at your institution

Search the database of **more than 600,000 names** using 26 criteria, including location, desired level and field of study, and TOEFL scores.

Cost: \$250 annual fee + \$.43/name

- No charge to create an account and do a volume projection

More info at

www.ets.org/toefl/search

Video: <https://toeflsearch.ets.org/toeflss/>

The screenshot shows the TOEFL Search Service website. At the top, there is a navigation bar with links: ETS HOME | TOEFL HOME | FOR TEST TAKERS | FOR INSTITUTIONS | FOR ENGLISH PROGRAMS. A search bar on the right contains 'ETS.org' and a 'Go' button. Below the navigation bar, the ETS TOEFL Search Service logo is displayed on the left, and 'Powered by HOBSON'S' is on the right. A large banner image shows a group of diverse students smiling. To the right of the banner is an 'Account Login' section with fields for 'User Name' and 'Password', a 'Sign In' button, and links for 'Forgot Username?' and 'Forgot Password?'. Below the login section is a 'New User? Create an Account' link. A horizontal menu below the banner includes 'About', 'Search Criteria', 'Resources', and 'Our Team'. The 'Getting Started' section on the left contains a 'Schedule a Personalized Tour' button, a sign-up link for a tour, and a 'Schedule a Tour' button. Below this is a 'Video Help' section with two video thumbnails: 'What is TOEFL Search Service?' and 'How to Create an Account'. The 'Reach the right international students at the right time' section on the right explains the service and lists four bullet points: search the database of more than 350,000 students; purchase names online anytime; easily use the data in recruitment and outreach efforts; and schedule recurring orders to save time. It also states that the search can include more than 26 criteria.

Go anywhere from here

TOEFL® Destinations Directory

Online directory of the 8,500+ TOEFL institutions

Help students find your institution by updating your information at www.toeflgoanywhere.org

The Advanced TOEFL® Search

Use the detailed search features below to find institutions that accept the TOEFL® test.

Institution Name

Test Scores

Select your test type and set a score to find schools that accept that score or lower.

☐ TOEFL IBT 90

☐ TOEFL PBT 200

Level of Study: -- Select --

The TOEFL® PBT test is not offered in all areas.

Country: UNITED KINGDOM

State/Region

City: London

search >

Search Results

Can't find the institution you're looking for? [Download our PDF](#) to view the complete list of 7,500+ institutions around the world that accept TOEFL scores, or use our [advanced search](#).

Rutgers **search >** **PRINT RESULTS**

1 - 10 of 15 | View: 10

Institution Name	Score	City	State/Region	Country
Rutgers, The State University of New Jersey-New Brunswick-Undergraduate Admissions DI Code: 2765	View	New Brunswick	New Jersey	USA
Rutgers University State College-New Brunswick DI Code: 2777	View	New Brunswick	New Jersey	USA
Rutgers, The State University of New Jersey-Newark-College of Arts & Sciences-Undergraduate Admissions DI Code: 2512	View	Newark	New Jersey	USA
Rutgers, The State University of New Jersey-Camden-Graduate Admissions DI Code: 2092	View	Camden	New Jersey	USA

Go anywhere from here

TOEFL® TV Channel on YouTube®

Make a short video about your institution and how it uses TOEFL test scores

The video should answer questions such as:

- What attracts international students to your school? Courses? Location? Costs? Faculty? Other?
- From which countries do most of your international students come?
- How do you use the TOEFL test?

17,000+ subscribers,
Over 1.3 million views
(as of February 2013)



Go anywhere from here

Official *TOEFL*® Pages on Facebook®

TOEFL



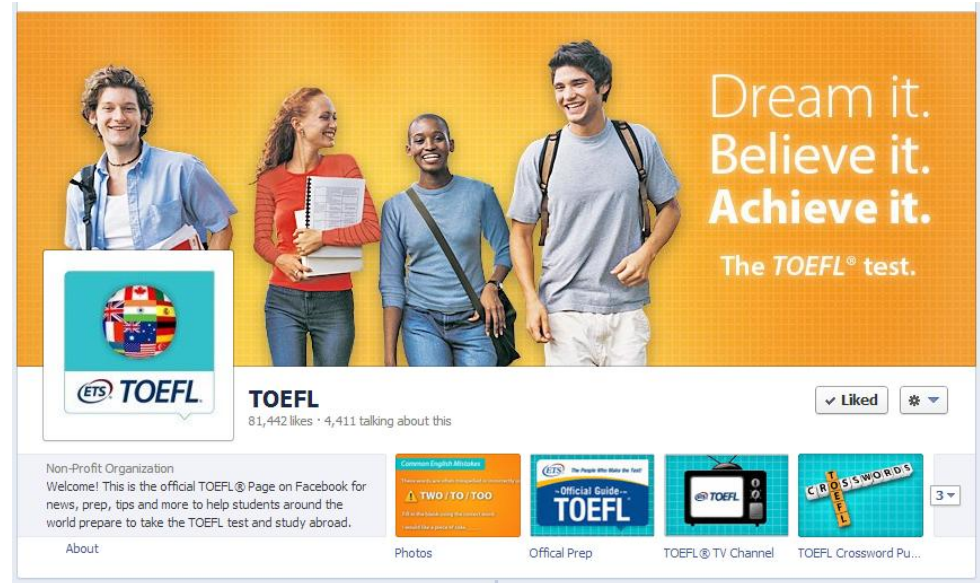
TOEFL India



TOEFL USA



TOEFL Canada



Pages include:

- Information about local events
- Test and skill-building tips
- Study videos
- Test prep materials including free sample test questions

Go anywhere from here

Official TOEFL® Page on Sina Weibo

Follow us to get the latest news, tips and resources
48,000+ followers and growing (as of February 2013)

<http://www.weibo.com/toeflgoanywhere>

ETS TOEFL

TOEFL托福考试官方社区

欢迎阅读托福考试官方博客 专为中国考生撰写

+ 加关注

推荐给朋友

主页 留言板 投票调研

公告栏

我们发现许多第三方网站或机构声称可以接受委托报名服务的信息。在此郑重声明，托福

留言 咨询 投诉 表扬

请文明发言，还可以输入114字

欢迎给我留言

表情 图片

同时发到微博

留言

#英语短语#我们早前发布的习语“The more the merrier”意思是“一个活动越多人参加越热闹”所以如果你在一个聚会上，你的朋友问能否带另一个朋友来时，你就可以这样回

新浪认证

托福考试官方微博

行业：教育出国 - 考试升学

申请认证>

100 48731 797

关注 粉丝 微博

关联品牌

TOEIC 职场英语标准

托业

+ 加关注

企业标签

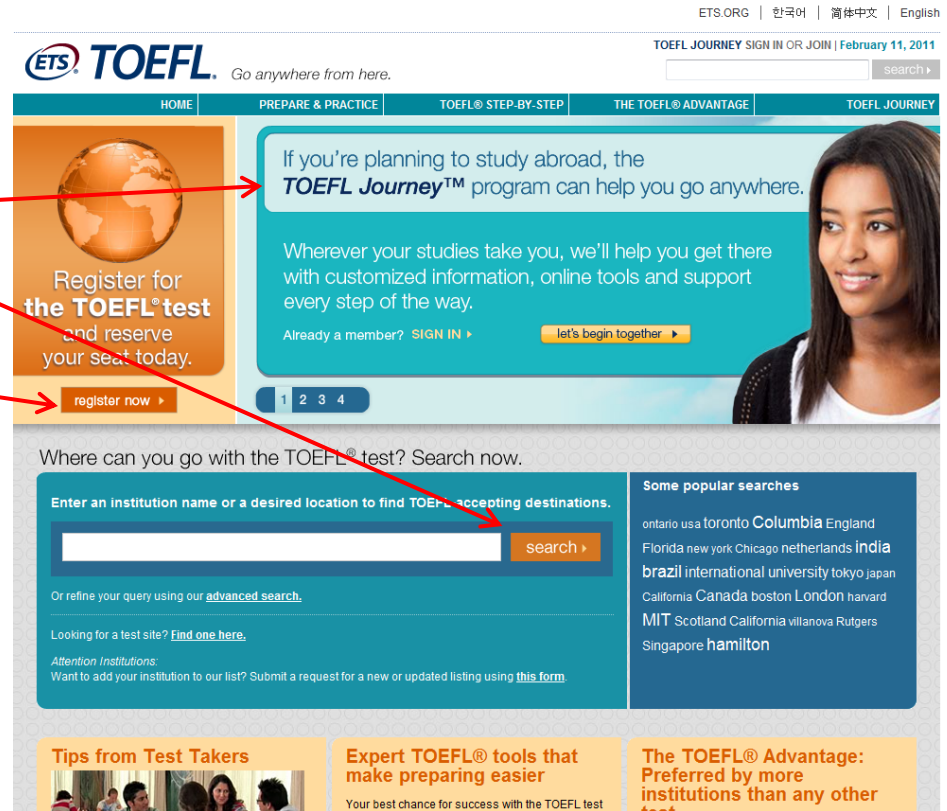
留学美国 留学新加坡 留学加拿大 留学澳洲 留学英国 海外高校教育 英语学习 托福考试 TOEFL ETS

TOEFL® Go Anywhere Website

www.toeflgoanywhere.org

Website contents include:

- TOEFL Journey® program
- TOEFL® Institutions search
- How to register
- Test prep resources
- Video tips



Go anywhere from here

TOEFL Journey® Program

TOEFL Journey program

- Provides relevant and helpful information for each stage of a student's test-taking journey
- Sends automatic notifications by email or SMS
- Includes a customisable *TOEFL Journey* dashboard



Join today at
www.toeflgoanywhere.org

Go anywhere from here

Videos for Students

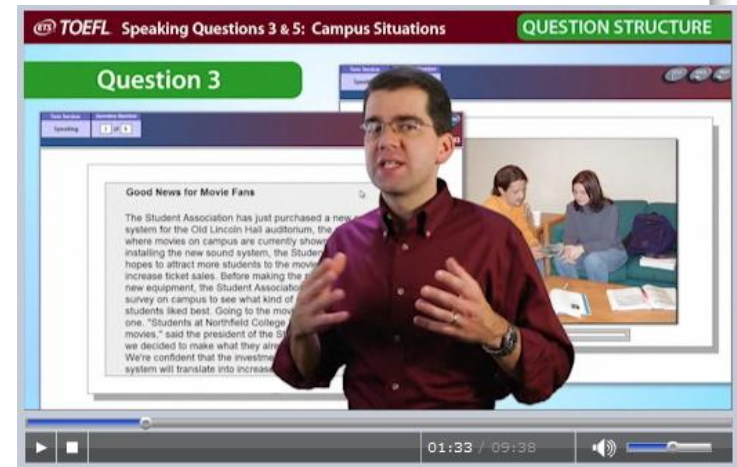
TOEFL® Resources: An Overview for Students

- Describes resources from ETS that help students prepare for the TOEFL test

Inside the TOEFL Test: Speaking and Writing

- 5 videos give an in-depth look at each Speaking and Writing question type

www.ets.org/toefl/video_library



Go anywhere from here

Videos for Students

Welcome to the *TOEFL iBT*® Test Site

- See what it's like at a real *TOEFL iBT* testing site



The *TOEFL*® Test: Your Passport to the World

- Learn how the TOEFL test can take you anywhere you want to go



The TOEFL Test Advantage

- Find out why more admissions officers prefer the TOEFL test



www.ets.org/toefl/video_library

Go anywhere from here

Free *TOEFL iBT*® Test Prep

TOEFL® Test Sampler

- Free with registration

Free Sample Questions

- www.toeflgoanywhere.org/content/test-tips-questions-you-experts
- Download or print-only format

TOEFL® Test Prep Planner:

- www.ets.org/toefl/planner

TOEFL iBT® Quick Prep:

- www.ets.org/toefl/quickprep



Go anywhere from here

TOEFL iBT® Test Prep

NEW! Official TOEFL iBT® Tests with Audio

- 5 real practice tests

The Official Guide to the TOEFL® Test

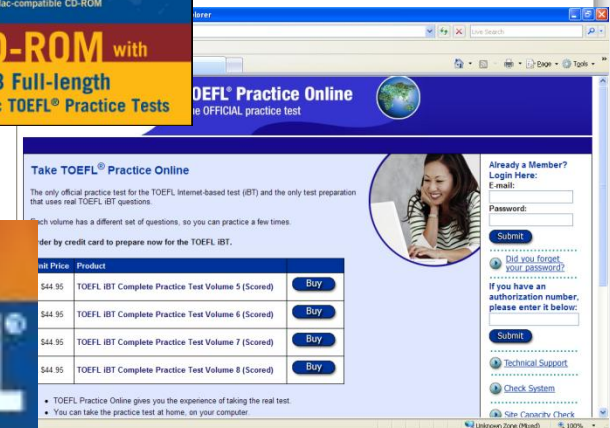
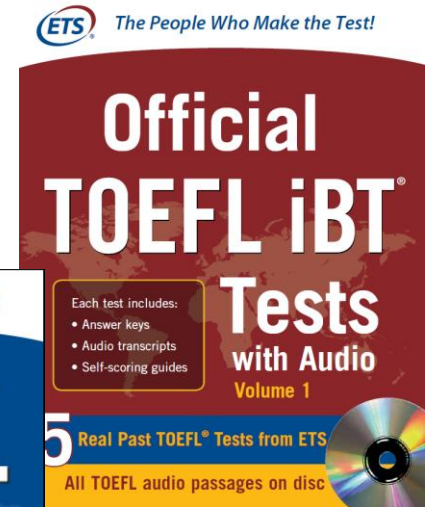
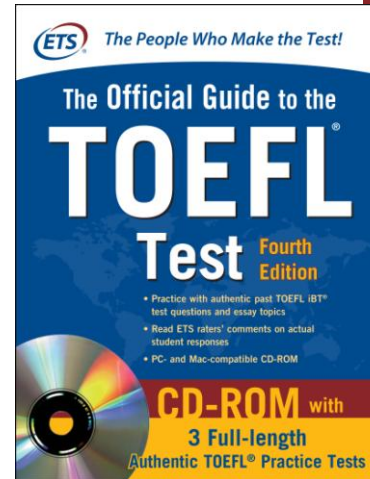
- Test prep handbook from ETS

TOEFL® Practice Online

- Real, complete practice tests

TOEFL® Value Packs

- Save up to 40% on official prep and other resources



Go anywhere from here

TOEFL® Scholarship Program

Recognises students who have:

- Excelled academically
- Demonstrated leadership skills
- Participated in extracurricular activities
- Achieved English-language proficiency

Universities that 2012 winners will attend include:

- Bond University at Queensland, University of Oxford, HEC Paris, London School of Economics, University of Toronto, McGill University, University of Hong Kong, Harvard University, LaTrobe University, Rotterdam School of Management
- 2013 Scholarships applications to open soon :
www.ets.org/toefl/scholarships

Go anywhere from here

The *TOEFL*[®] test:

Advantages that make the journey easier.



www.toeflgoanywhere.org

mknab@ets.org
sbhangal@etsglobal.org