

Safe Environments Safe Culture

**John Campbell
Assistant Chief Constable
Thames Valley Police**

- History – ‘Just a Domestic’



The murder of Julia and William Pemberton on 18th November 2003



PCC Priorities

- **Priority 1 - To cut crimes that are of most concern to the public and to protect the most vulnerable members of our communities**



Strategic Approach

- To adopt a proactive intelligence-led approach in preventing and reducing domestic and child abuse
- To effectively investigate all reports of domestic/child abuse
- To facilitate effective action against offenders in order that they can be held accountable through the Criminal Justice System.

Calls for help...

1m + general calls

260,000 999 calls

102, 000 immediate responses

149,000 urgent responses

111,000 scheduled responses

184,000 telephone resolutions



45,000 arrests

19,000 charges

3,800 cautions

Response to Domestic Abuse

CRED
Initial report
identified as
domestic
abuse

IRB/CRED
Intelligence
researched
and
supplied to
attending
officers en
route

**RESPONSE
OFFICERS**
Welfare checks
Crime/Incident
Investigative actions
Positive Intervention
Risk Assessment
Initial risk
management
Victim safety planning
for standard cases
Investigate standard
and medium cases

**REFERRAL
CENTRES**
Review risk levels
Review all child
cases (SIR)
All Medium/High
risk referred to
DAIU
Info-share with
partner agencies
7 standards +2
crimes- referred
to MARAC

DA/CA OFFICERS
Contact victim to
complete additional
risk assessment &
safety plan
Investigate high risk
cases and some
medium risk.
All Medium & High
risk- manage risk to
victim
Refer High risk to
MARAC on Modus
and liaise with partner
agencies- IDVA etc.
Regular review of risk
management

Operational Response



Immediate Response

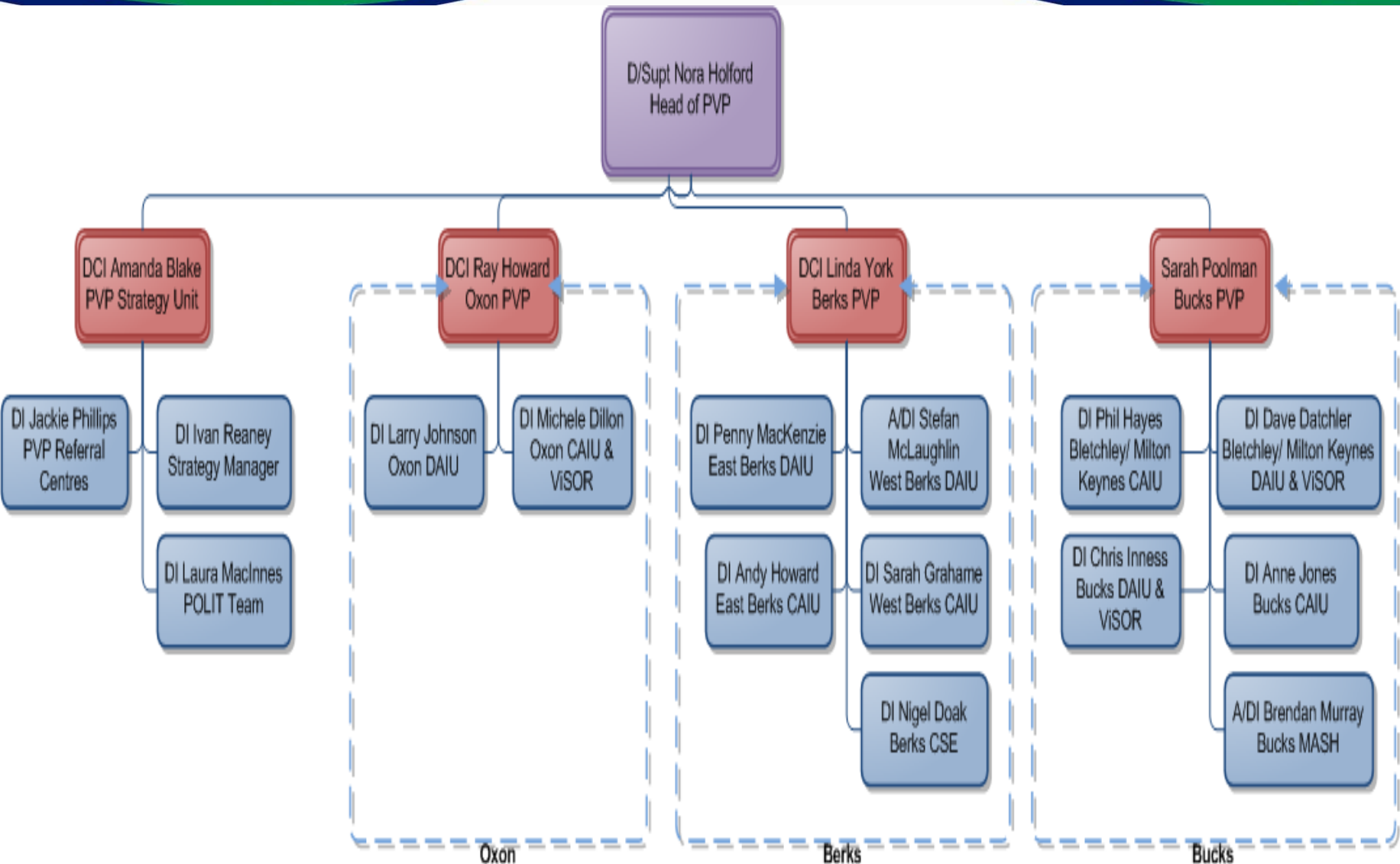
Risk Assessment

Positive Intervention

Niche RMS

DASH

- Incident DASH risk assessment tool
- Developed by an operational user group including external DV Co-ordinators
- More user friendly form
- Intelligence checks by IRB
- Pilot in Oxon June 2012, control group Slough LPA
- Independent evaluation
- Force wide training
- Implementation since July 2013



The Partnership Landscape

- 13 LPAs, 16 local authorities (7 unitary)
- 9 Local Safeguarding Children Boards
- 7 Adult Safeguarding Boards
- 9 different LA thresholds for children & adult social care
- 12 MARACs – High risk cases discussed
- CPS/ Courts

What Does Success Look Like?

A man who assaulted his partner was arrested, charged, remanded, and convicted after a crown court trial, within 16 days of committing the offence.

Amersham Crown Court prioritised the trial and the vulnerable victim gave evidence via video link from Milton Keynes on Friday 18 October. Offender was convicted of assault causing actual bodily harm and sentenced yesterday (21/10) to 15 months imprisonment and given a five year restraining order.

The Learning Organisation

- Domestic Abuse Scrutiny Panel
- Investigation Review Panel
- Major Crime Investigation Review Team
- PVP Strategy Unit
- Domestic/Child Abuse

Emerging threats....

- Child Sexual Exploitation
- Op Bullfinch
- Op Kingfisher



External Inspection

- HMIC
- *'Public can have confidence they get a good service from TVP'*



The Future - MASH

- Early identification and understanding of risk and harm
- Victim identification and intervention
- Harm identification and reduction
- Understanding and dealing with families in an holistic way
- Improving children, families and vulnerable adults access to supportive services

Thank you